

# EIF4G1 antibody

**Cat. No. GTX22609**

<b>Host</b>	Rabbit
<b>Clonality</b>	Polyclonal
<b>Isotype</b>	IgG
<b>Application</b>	WB, IP
<b>Reactivity</b>	Human, Rat, Pig

**Package**  
50 µg

## APPLICATION

### Application Note

\*Optimal dilutions/concentrations should be determined by the researcher.

Suggested dilution	Recommended dilution
WB	1:1000 - 1:10000
IP	1 - 4 µg/mg lysate

Not tested in other applications.

**Calculated MW** 175 kDa. ([Note](#))

## PROPERTIES

<b>Form</b>	Liquid
<b>Buffer</b>	Tris-Citrate/Phosphate
<b>Preservative</b>	0.09% Sodium azide
<b>Storage</b>	Store as concentrated solution. Centrifuge briefly prior to opening vial. Store at 4°C. DO NOT FREEZE.
<b>Concentration</b>	1 mg/ml (Please refer to the vial label for the specific concentration.)
<b>Immunogen</b>	The immunogen recognized by this antibody maps to a region between residues 575 and 625 of human Eukaryotic Initiation Factor 4 Gamma 1 (NP_886553.2).
<b>Purification</b>	Purified by antigen-affinity chromatography
<b>Conjugation</b>	Unconjugated

### Note

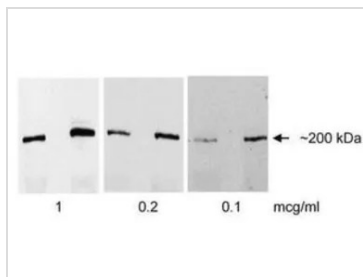
For laboratory research use only. Not for any clinical, therapeutic, or diagnostic use in humans or animals. Not for animal or human consumption.

Purchasers shall not, and agree not to enable third parties to, analyze, copy, reverse engineer or otherwise attempt to determine the structure or sequence of the product.



For full product information, images and publications, please visit our [website](#).

## DATA IMAGES



### GTX22609 WB Image

WB analysis of rat liver tissue (50µg, 150µg) using GTX22609 EIF4G1 antibody.

Dilution : 1, 0.2, 0.1µg/ml



For full product information, images and publications, please visit our [website](https://www.genetex.com).