

NFAT1 antibody [25A10.D6.D2]

Cat. No. GTX22722

Host	Mouse
Clonality	Monoclonal
Isotype	IgG1
Applications	WB, ICC/IF, IHC-P, IHC-Fr, FCM, IP, ChIP assay, Gel supershift assays
Reactivity	Human, Mouse, Rat

References (2)

Package

100 µg

Applications

Application Note

*Optimal dilutions/concentrations should be determined by the researcher.

Suggested dilution	Recommended dilution
WB	1 µg/ml
ICC/IF	1:100 - 1:1000
IHC-P	1:50-1:200
IHC-Fr	1:50-1:200
FCM	Assay dependent
IP	Assay dependent
ChIP assay	1-3 µl
Gel supershift assays	Assay dependent

Not tested in other applications.

Calculated MW 100 kDa. ([Note](#))**Product Note** This antibody does not cross react with NFAT2 (NFATc, NFATc1).

Properties

Form	Liquid
Buffer	PBS
Preservative	0.05% Sodium azide
Storage	Store as concentrated solution. Centrifuge briefly prior to opening vial. For short-term storage (1-2 weeks), store at 4°C. For long-term storage, aliquot and store at -20°C or below. Avoid multiple freeze-thaw cycles.
Concentration	1 mg/ml (Please refer to the vial label for the specific concentration.)
Immunogen	Synthetic peptide corresponding to residues A(51) I S S P S G L A Y P D D V L D Y G L(69) of mouse NFATc2-A, B and C isoforms.

For full product information, images and publications, please visit our [website](#).

Date 2025 / 05 / 30 Page 1 of 2

Purification Protein G purified

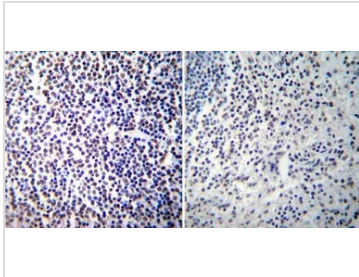
Conjugation Unconjugated

Note

For laboratory research use only. Not for any clinical, therapeutic, or diagnostic use in humans or animals. Not for animal or human consumption.

Purchasers shall not, and agree not to enable third parties to, analyze, copy, reverse engineer or otherwise attempt to determine the structure or sequence of the product.

DATA IMAGES



GTX22722 IHC-P Image

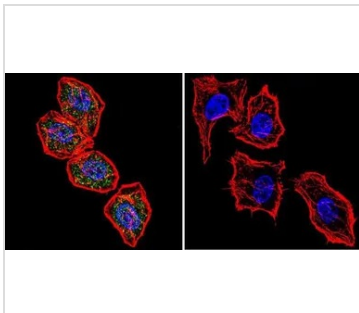
IHC-P analysis of human spleen tissue using GTX22722 NFAT1 antibody [25A10.D6.D2].

Left : Primary antibody

Right : Negative control without primary antibody

Antigen retrieval : heat induced antigen retrieval was performed using 10mM sodium citrate (pH6.0) buffer, microwaved for 8-15 minutes

Dilution : 1:100



GTX22722 ICC/IF Image

ICC/IF analysis of HeLa cells using GTX22722 NFAT1 antibody [25A10.D6.D2]. Cells were probed without (right) or with(left) an antibody.

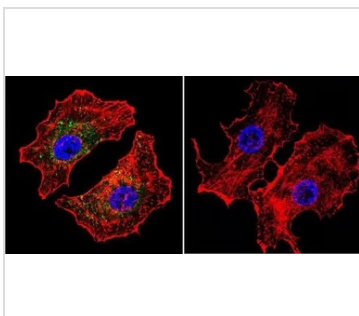
Green : Primary antibody

Blue : Nuclei

Red : Actin

Fixation : formaldehyde

Dilution : 1:20 overnight at 4°C



GTX22722 ICC/IF Image

ICC/IF analysis of MCF-7 cells using GTX22722 NFAT1 antibody [25A10.D6.D2]. Cells were probed without (right) or with(left) an antibody.

Green : Primary antibody

Blue : Nuclei

Red : Actin

Fixation : formaldehyde

Dilution : 1:20 overnight at 4°C



For full product information, images and publications, please visit our [website](#).