

PSD95 antibody [6G6-1C9]

Cat. No. GTX22723

Host	Mouse
Clonality	Monoclonal
Isotype	IgG2a
Application	WB, ICC/IF, IHC-Fr, FACS, IP, ChIP assay, IHC, Neutralizing/Inhibition
Reactivity	Human, Mouse, Rat, Caenorhabditis elegans, Primate

Reference (1)

Package

100 µl

APPLICATION

Application Note

*Optimal dilutions/concentrations should be determined by the researcher.

Suggested dilution	Recommended dilution
WB	1:2,000
ICC/IF	1:500
IHC-Fr	Assay dependent
FACS	2 µg/test
IP	Assay dependent
ChIP assay	Assay dependent
IHC	Assay dependent
Neutralizing/Inhibition	Assay dependent

Not tested in other applications.

Calculated MW 80 kDa. ([Note](#))

PROPERTIES

Form	Liquid
Buffer	PBS
Preservative	0.05% Sodium azide
Storage	Store as concentrated solution. Centrifuge briefly prior to opening vial. For short-term storage (1-2 weeks), store at 4°C. For long-term storage, aliquot and store at -20°C or below. Avoid multiple freeze-thaw cycles.
Concentration	3.3 mg/ml (Please refer to the vial label for the specific concentration.)
Immunogen	Purified recombinant rat PSD-95.
Purification	Protein A purified



For full product information, images and publications, please visit our [website](#).

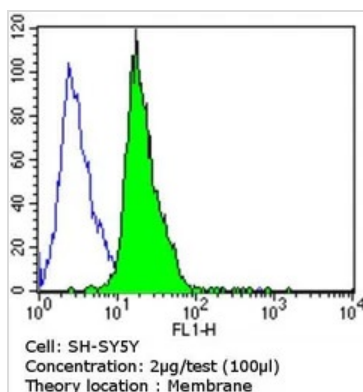
Conjugation

Unconjugated

Note

For laboratory research use only. Not for any clinical, therapeutic, or diagnostic use in humans or animals. Not for animal or human consumption.

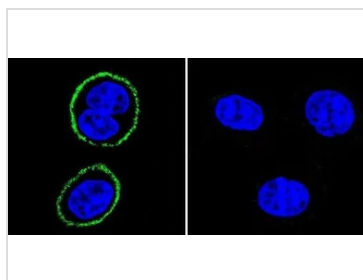
Purchasers shall not, and agree not to enable third parties to, analyze, copy, reverse engineer or otherwise attempt to determine the structure or sequence of the product.

DATA IMAGES

GTX22723 FACS Image

FACS analysis of SH-SY5Y cells using GTX22723 PSD95 antibody [6G6-1C9] compared to an isotype control (blue).

Dilution : 2 ug/test for 60 min at room temperature

Fixation : 2% paraformaldehyde


GTX22723 ICC/IF Image

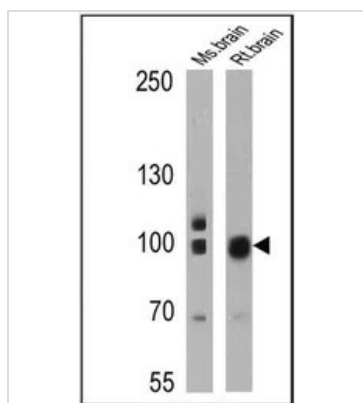
ICC/IF analysis of HeLa cells using GTX22723 PSD95 antibody [6G6-1C9]. Cells were probed without (right) or with(left) an antibody.

Green : Primary antibody

Blue : Nuclei

Fixation : formaldehyde

Dilution : 1:200 overnight at 4°C


GTX22723 WB Image

WB analysis of 25 ug of mouse brain (lane 1) and rat brain (lane 2) cell lysates using GTX22723 PSD95 antibody [6G6-1C9].

Dilution : 1:200


 For full product information, images and publications, please visit our [website](https://www.genetex.com).