

## CaMKII alpha (phospho Thr286) antibody [22B1]

**Cat. No. GTX22724**

<b>Host</b>	Mouse
<b>Clonality</b>	Monoclonal
<b>Isotype</b>	IgG1
<b>Applications</b>	WB, ICC/IF, FCM, IP, ELISA, IHC
<b>Reactivity</b>	Human, Mouse, Rat, Rabbit

References ( 2 )

Package

100 µl

## Applications

**Application Note**

\*Optimal dilutions/concentrations should be determined by the researcher.

Suggested dilution	Recommended dilution
WB	1:2,000
ICC/IF	1:50-1:100
FCM	1µg per 10 <sup>6</sup> cells
IP	Assay dependent
ELISA	Assay dependent
IHC	Assay dependent

Not tested in other applications.

**Calculated MW** 54 kDa. ( [Note](#) )**Product Note**

This antibody has been shown to detect the phosphorylated alpha subunit CaM kinase II only. It does not detect the non-phosphorylated alpha subunit CaM kinase II nor with the ~60 kDa beta subunit in either phosphorylation state. Immunofluorescence staining of CaM kinase II in rat/mouse hippocampal cells with GTX22724 densely labels cell somas and neuropil areas, while nuclei are only lightly stained.

## Properties

<b>Form</b>	Liquid
<b>Buffer</b>	PBS
<b>Preservative</b>	0.05% Sodium azide
<b>Storage</b>	Store as concentrated solution. Centrifuge briefly prior to opening vial. For short-term storage (1-2 weeks), store at 4°C. For long-term storage, aliquot and store at -20°C or below. Avoid multiple freeze-thaw cycles.
<b>Concentration</b>	1 mg/ml (Please refer to the vial label for the specific concentration.)
<b>Immunogen</b>	Synthetic peptide corresponding to residues M(281) H R Q E T(p) V D C L K K F N(294) of rat CaM Kinase II protein.



For full product information, images and publications, please visit our [website](#).

Date 2026 / 05 / 04 Page 1 of 2

**Purification** Protein G purified

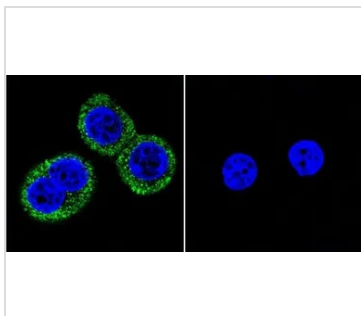
**Conjugation** Unconjugated

**Note**

For laboratory research use only. Not for any clinical, therapeutic, or diagnostic use in humans or animals. Not for animal or human consumption.

Purchasers shall not, and agree not to enable third parties to, analyze, copy, reverse engineer or otherwise attempt to determine the structure or sequence of the product.

**DATA IMAGES**



**GTX22724 ICC/IF Image**

ICC/IF analysis of U251 cells using GTX22724 CaMKII alpha (phospho Thr286) antibody [22B1]. Cells were probed without (right) or with(left) an antibody.

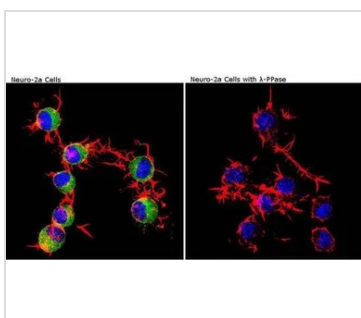
Green : Primary antibody

Blue : Nuclei

Red : Actin

Fixation : formaldehyde

Dilution : 1:100 overnight at 4 °C



**GTX22724 ICC/IF Image**

ICC/IF analysis of Neuro-2a cells (left panel) or cells stimulated with Lamda-Phosphatase (Lambda-PPase) (right panel) using GTX22724 CaMKII alpha (phospho Thr286) antibody [22B1].

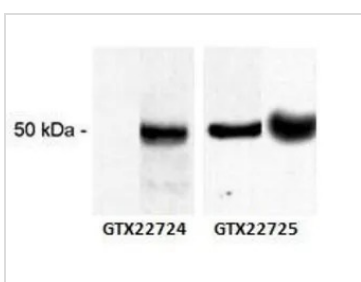
Green : Primary antibody

Blue : Nuclei

Red : Actin

Fixation : Formalin

Permeabilization : 0.1% Triton X-100 in TBS for 5-10 minute



**GTX22724 WB Image**

WB analysis of unphosphorylated and phosphorylated rat brain homogenate (left and right lanes respectively) using GTX22724 CaMKII alpha (phospho Thr286) antibody [22B1] or GTX22725CaMKII alpha antibody [6G9] .



For full product information, images and publications, please visit our [website](#).