

CETP antibody [ATM192]

Cat. No. GTX22726

Host	Mouse
Clonality	Monoclonal
Isotype	IgG1
Applications	WB, ICC/IF, IP, ELISA
Reactivity	Human, Rabbit

Package
100 µl

Applications

Application Note

*Optimal dilutions/concentrations should be determined by the researcher.

Suggested dilution	Recommended dilution
WB	1-3 µg/ml
ICC/IF	1:20
IP	Assay dependent
ELISA	Assay dependent

Not tested in other applications.

Calculated MW 55 kDa. ([Note](#))

Properties

Form	Liquid
Buffer	PBS
Preservative	0.05% Sodium azide
Storage	Store as concentrated solution. Centrifuge briefly prior to opening vial. For short-term storage (1-2 weeks), store at 4°C. For long-term storage, aliquot and store at -20°C or below. Avoid multiple freeze-thaw cycles.
Concentration	2 mg/ml (Please refer to the vial label for the specific concentration.)
Immunogen	Synthetic peptide corresponding to residues C D(149) S G R V R T D A P D(159) of human CETP protein.
Purification	Protein A purified
Conjugation	Unconjugated

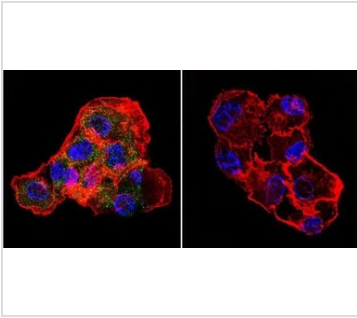
Note

For laboratory research use only. Not for any clinical, therapeutic, or diagnostic use in humans or animals. Not for animal or human consumption.

Purchasers shall not, and agree not to enable third parties to, analyze, copy, reverse engineer or otherwise attempt to determine the structure or sequence of the product.

For full product information, images and publications, please visit our [website](#).

DATA IMAGES



GTX22726 ICC/IF Image

ICC/IF analysis of HepG2 cells using GTX22726 CETP antibody [ATM192]. Cells were probed without (right) or with (left) an antibody.

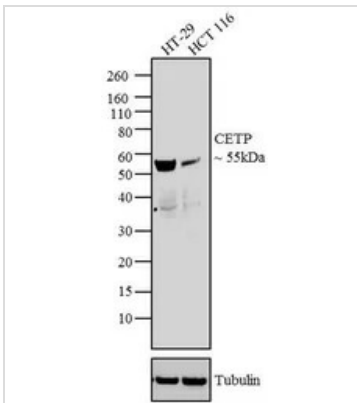
Green : Primary antibody

Blue : Nuclei

Red : Actin

Fixation : formaldehyde

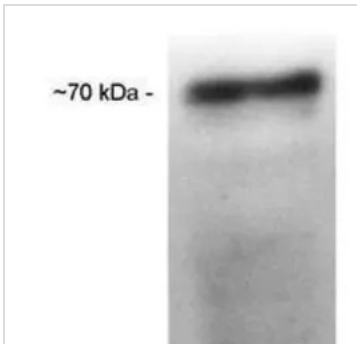
Dilution : 1:20 overnight at 4°C



GTX22726 WB Image

WB analysis of HT-29 (Lane 1) and HCT 116 (Lane 2) using GTX22726 CETP antibody [ATM192].

Dilution : 2 µg/ml



GTX22726 WB Image

WB analysis of human liver extract using GTX22726 CETP antibody [ATM192].



For full product information, images and publications, please visit our [website](https://www.genetex.com).