

Cytohesin 1 antibody [2E11]

Cat. No. GTX22727

| | |
|---------------------|--------------|
| Host | Mouse |
| Clonality | Monoclonal |
| Isotype | IgG1 |
| Applications | WB, ICC/IF |
| Reactivity | Human, Mouse |

Package
100 µg

Applications

Application Note

*Optimal dilutions/concentrations should be determined by the researcher.

| Suggested dilution | Recommended dilution |
|--------------------|----------------------|
| WB | 1.0 µg/ml |
| ICC/IF | 1:20 |

Not tested in other applications.

Calculated MW 46 kDa. ([Note](#))

Properties

| | |
|----------------------|--|
| Form | Liquid |
| Buffer | PBS, 0.1% BSA |
| Preservative | 0.05% Sodium azide |
| Storage | Store as concentrated solution. Centrifuge briefly prior to opening vial. For short-term storage (1-2 weeks), store at 4°C. For long-term storage, aliquot and store at -20°C or below. Avoid multiple freeze-thaw cycles. |
| Concentration | 1 mg/ml (Please refer to the vial label for the specific concentration.) |
| Immunogen | Purified, His-tagged cytohesin-1. |
| Purification | Purified by polyethylene glycol precipitation |
| Conjugation | Unconjugated |

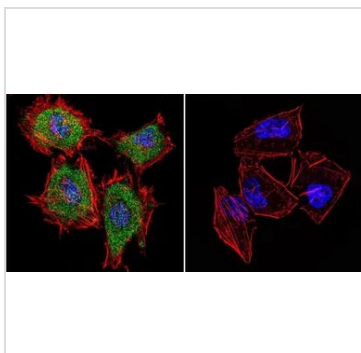
Note

For laboratory research use only. Not for any clinical, therapeutic, or diagnostic use in humans or animals. Not for animal or human consumption.

Purchasers shall not, and agree not to enable third parties to, analyze, copy, reverse engineer or otherwise attempt to determine the structure or sequence of the product.



For full product information, images and publications, please visit our [website](#).

DATA IMAGES

GTX22727 ICC/IF Image

ICC/IF analysis of HeLa cells using GTX22727 Cytohesin 1 antibody [2E11]. Cells were probed without (right) or with(left) an antibody.

Green : Primary antibody

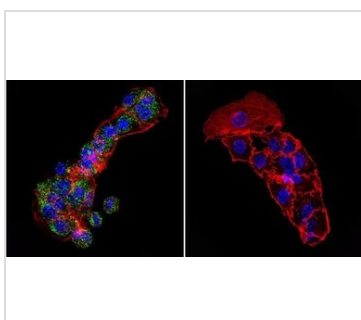
Blue : Nuclei

Red : Actin

Fixation : 4% paraformaldehyde

Permeabilization : 0.1% Triton X-100 for 10 minute

Dilution : 2 µg/ml in 0.1% BSA and incubated for 3 hours at room temperature


GTX22727 ICC/IF Image

ICC/IF analysis of HepG2 cells using GTX22727 Cytohesin 1 antibody [2E11]. Cells were probed without (right) or with(left) an antibody.

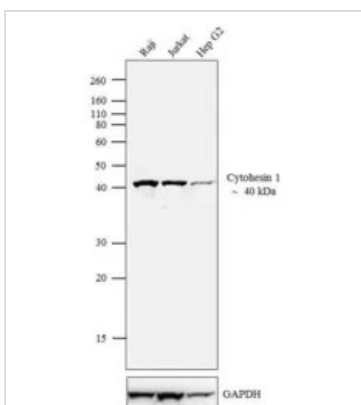
Green : Primary antibody

Blue : Nuclei

Red : Actin

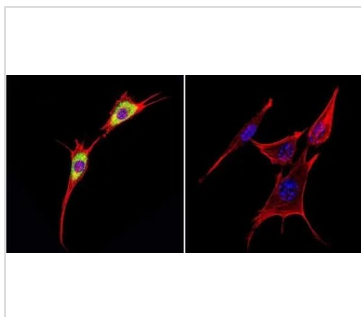
Fixation : formaldehyde

Dilution : 1:20 overnight at 4°C


GTX22727 WB Image

WB analysis of whole cell extracts (30 µg lysate) of Raji (Lane 1), Jurkat (Lane 2) and Hep G2 (Lane 3) using GTX22727 Cytohesin 1 antibody [2E11].

Dilution : 0.5-2 µg/ml


GTX22727 ICC/IF Image

ICC/IF analysis of NIH-3T3 cells using GTX22727 Cytohesin 1 antibody [2E11]. Cells were probed without (right) or with(left) an antibody.

Green : Primary antibody

Blue : Nuclei

Red : Actin

Fixation : formaldehyde

Dilution : 1:20 overnight at 4°C



For full product information, images and publications, please visit our [website](https://www.genetex.com).