

Cytohesin 1 + Cytohesin 2 antibody [6G11]

Cat. No. GTX22729

Host	Mouse
Clonality	Monoclonal
Isotype	IgG1
Applications	WB, ICC/IF, IHC-P, IP
Reactivity	Human, Mouse

Package
100 µg

Applications

Application Note

*Optimal dilutions/concentrations should be determined by the researcher.

Suggested dilution	Recommended dilution
WB	1.0 µg/ml
ICC/IF	1:100
IHC-P	1:200-500
IP	Assay dependent

Not tested in other applications.

Calculated MW 47 kDa. ([Note](#))

Properties

Form	Liquid
Buffer	PBS, 0.1% BSA
Preservative	0.05% Sodium azide
Storage	Store as concentrated solution. Centrifuge briefly prior to opening vial. For short-term storage (1-2 weeks), store at 4°C. For long-term storage, aliquot and store at -20°C or below. Avoid multiple freeze-thaw cycles.
Concentration	1 mg/ml (Please refer to the vial label for the specific concentration.)
Immunogen	Purified, His-tagged cytohesin-1.
Purification	Purified by polyethylene glycol precipitation
Conjugation	Unconjugated

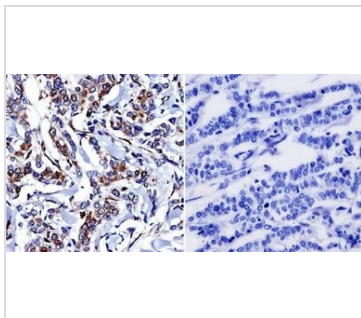
Note

For laboratory research use only. Not for any clinical, therapeutic, or diagnostic use in humans or animals. Not for animal or human consumption.

Purchasers shall not, and agree not to enable third parties to, analyze, copy, reverse engineer or otherwise attempt to determine the structure or sequence of the product.



For full product information, images and publications, please visit our [website](#).

DATA IMAGES

GTx22729 IHC-P Image

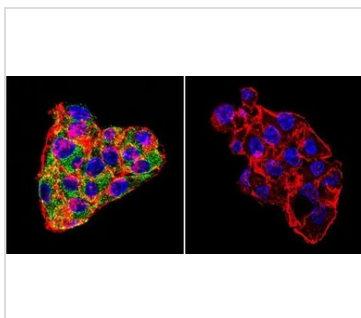
IHC-P analysis of human breast carcinoma tissue using GTx22729 Cytohesin 1 + Cytohesin 2 antibody [6G11].

Left : Primary antibody

Right : Negative control without primary antibody

Antigen retrieval : heat induced antigen retrieval was performed using 10mM sodium citrate (pH6.0) buffer, microwaved for 8-15 minutes

Dilution : 1:300


GTx22729 ICC/IF Image

ICC/IF analysis of HepG2 cells using GTx22729 Cytohesin 1 + Cytohesin 2 antibody [6G11]. Cells were probed without (right) or with (left) an antibody.

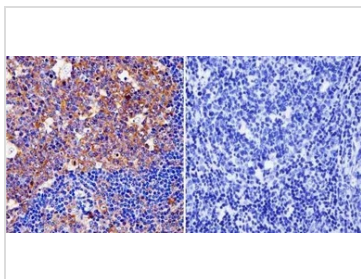
Green : Primary antibody

Blue : Nuclei

Red : Actin

Fixation : formaldehyde

Dilution : 1:100 overnight at 4 °C


GTx22729 IHC-P Image

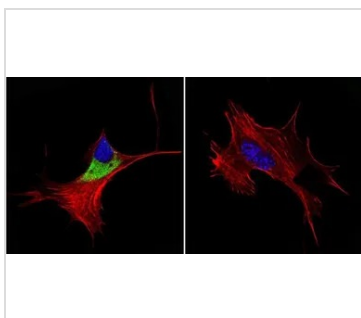
IHC-P analysis of human tonsil tissue using GTx22729 Cytohesin 1 + Cytohesin 2 antibody [6G11].

Left : Primary antibody

Right : Negative control without primary antibody

Antigen retrieval : heat induced antigen retrieval was performed using 10mM sodium citrate (pH6.0) buffer, microwaved for 8-15 minutes

Dilution : 1:200


GTx22729 ICC/IF Image

ICC/IF analysis of NIH-3T3 cells using GTx22729 Cytohesin 1 + Cytohesin 2 antibody [6G11]. Cells were probed without (right) or with (left) an antibody.

Green : Primary antibody

Blue : Nuclei

Red : Actin

Fixation : formaldehyde

Dilution : 1:100 overnight at 4 °C



For full product information, images and publications, please visit our [website](https://www.genetex.com).