

Clathrin heavy chain antibody [X22]

Cat. No. GTX22731

| | |
|---------------------|--|
| Host | Mouse |
| Clonality | Monoclonal |
| Isotype | IgG1 |
| Applications | WB, ICC/IF, IHC-P, IHC-Fr, FCM, IP, IHC, IM, Neutralizing/Inhibition |
| Reactivity | Human, Mouse, Rat, Bovine, Dog, Hamster, Primate |

References (7)

Package

100 µl

Applications

Application Note

*Optimal dilutions/concentrations should be determined by the researcher.

| Suggested dilution | Recommended dilution |
|-------------------------|----------------------|
| WB | 1:100-1:500 |
| ICC/IF | 1:1,000 |
| IHC-P | 1:100 |
| IHC-Fr | Assay dependent |
| FCM | 1/200 |
| IP | Assay dependent |
| IHC | Assay dependent |
| IM | Assay dependent |
| Neutralizing/Inhibition | Assay dependent |

Not tested in other applications.

Calculated MW 192 kDa. ([Note](#))**Product Note**

Electron microscopy and proteolysis mapping demonstrate that MA1-065 binding occurs towards the central hub of the triskelion, N-terminal to the light chain binding regions.
KO/KD validation is based on published data (PMID: 30787373).

Properties

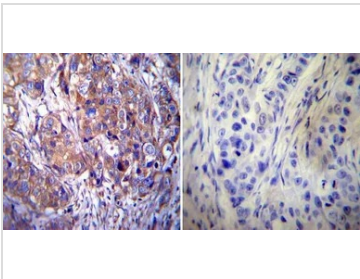
| | |
|---------------------|--|
| Form | Liquid |
| Buffer | PBS |
| Preservative | 0.05% Sodium azide |
| Storage | Store as concentrated solution. Centrifuge briefly prior to opening vial. For short-term storage (1-2 weeks), store at 4°C. For long-term storage, aliquot and store at -20°C or below. Avoid multiple freeze-thaw cycles. |



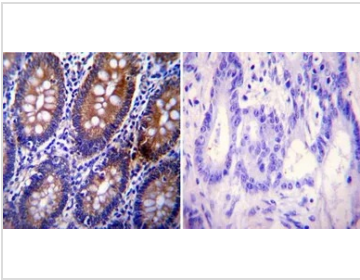
For full product information, images and publications, please visit our [website](#).

| | |
|----------------------|--|
| Concentration | 6 mg/ml (Please refer to the vial label for the specific concentration.) |
| Immunogen | Purified human brain clathrin heavy chain. |
| Purification | Protein A purified |
| Conjugation | Unconjugated |
| Note | For laboratory research use only. Not for any clinical, therapeutic, or diagnostic use in humans or animals. Not for animal or human consumption. Purchasers shall not, and agree not to enable third parties to, analyze, copy, reverse engineer or otherwise attempt to determine the structure or sequence of the product. |

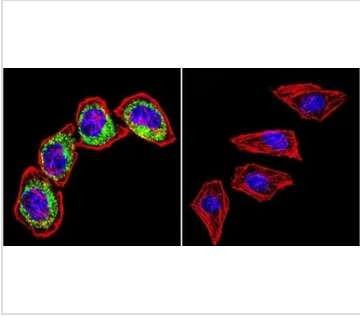
DATA IMAGES




GTX22731 IHC-P Image
 IHC-P analysis of human breast carcinoma tissue using GTX22731 Clathrin heavy chain antibody [X22].
 Left : Primary antibody
 Right : Negative control without primary antibody
 Antigen retrieval : heat induced antigen retrieval was performed using 10mM sodium citrate (pH6.0) buffer, microwaved for 8-15 minutes
 Dilution : 1:100



GTX22731 IHC-P Image
 IHC-P analysis of human colon tissue using GTX22731 Clathrin heavy chain antibody [X22].
 Left : Primary antibody
 Right : Negative control without primary antibody
 Antigen retrieval : heat induced antigen retrieval was performed using 10mM sodium citrate (pH6.0) buffer, microwaved for 8-15 minutes
 Dilution : 1:100



GTX22731 ICC/IF Image
 ICC/IF analysis of HeLa cells using GTX22731 Clathrin heavy chain antibody [X22]. Cells were probed without (right) or with(left) an antibody.
 Green : Primary antibody
 Blue : Nuclei
 Red : Actin
 Fixation : formaldehyde
 Dilution : 1:200 overnight at 4°C



For full product information, images and publications, please visit our [website](#).