

IGF2R antibody [2G11]

Cat. No. GTX22733

Host	Mouse
Clonality	Monoclonal
Isotype	IgG2a
Applications	WB, ICC/IF, FCM, IP, IHC
Reactivity	Human, Rat, Rabbit, Bovine, Hamster, Primate

Package
100 µg

Applications

Application Note

*Optimal dilutions/concentrations should be determined by the researcher.

Suggested dilution	Recommended dilution
WB	1 µg/ml
ICC/IF	2-5 µg/ml
FCM	1µg per 10 ⁶ cells
IP	Assay dependent
IHC	Assay dependent

Not tested in other applications.

Calculated MW 275 kDa. ([Note](#))

Product Note This antibody is shown to recognize an epitope in the extracellular domain of MPR.

Properties

Form	Liquid
Buffer	PBS
Preservative	0.05% Sodium azide
Storage	Store as concentrated solution. Centrifuge briefly prior to opening vial. For short-term storage (1-2 weeks), store at 4°C. For long-term storage, aliquot and store at -20°C or below. Avoid multiple freeze-thaw cycles.
Concentration	1 mg/ml (Please refer to the vial label for the specific concentration.)
Immunogen	Purified bovine ~300 kDa CI-MPR.
Purification	Protein A purified
Conjugation	Unconjugated



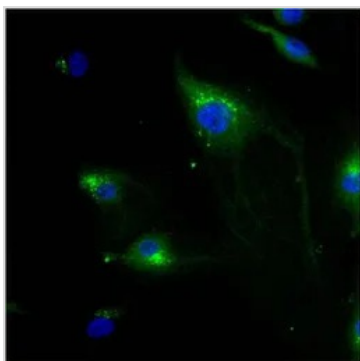
For full product information, images and publications, please visit our [website](#).

For laboratory research use only. Not for any clinical, therapeutic, or diagnostic use in humans or animals. Not for animal or human consumption.

Note

Purchasers shall not, and agree not to enable third parties to, analyze, copy, reverse engineer or otherwise attempt to determine the structure or sequence of the product.

DATA IMAGES

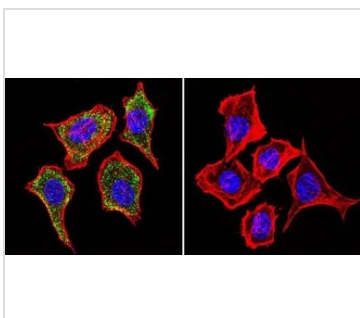


GTX22733 ICC/IF Image

ICC/IF analysis of HMVEC Cells using GTX22733 IGF2R antibody [2G11].

Green : Primary antibody

Blue : Nuclei



GTX22733 ICC/IF Image

ICC/IF analysis of HeLa cells using GTX22733 IGF2R antibody [2G11]. Cells were probed without (right) or with(left) an antibody.

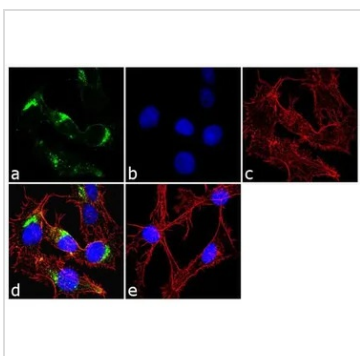
Green : Primary antibody

Blue : Nuclei

Red : Actin

Fixation : formaldehyde

Dilution : 1:20 overnight at 4°C



GTX22733 ICC/IF Image

ICC/IF analysis of HepG2 cells using GTX22733 IGF2R antibody [2G11]. Panel e is a no primary antibody control.

Green : Primary antibody

Blue : Nuclei

Red : Actin

Fixation : 4% paraformaldehyde

Permeabilization : 0.1% Triton X-100 for 10 minute

Dilution : 2 µg/ml in 0.1% BSA incubated for 3 hours at room temperature



For full product information, images and publications, please visit our [website](#).