

Hepatitis B virus X protein antibody [X36C]

Cat. No. GTX22741

Host	Mouse
Clonality	Monoclonal
Isotype	IgG1
Applications	WB, ICC/IF, IHC-P, IP, ELISA, ChIP assay, IHC
Reactivity	Hepatitis B virus

References (4)

 Review (1)

Package

100 µg

Applications

Application Note

*Optimal dilutions/concentrations should be determined by the researcher.

Suggested dilution	Recommended dilution
WB	1 µg/ml
ICC/IF	Assay dependent
IHC-P	Assay dependent
IP	Assay dependent
ELISA	Assay dependent
ChIP assay	Assay dependent
IHC	Assay dependent

Not tested in other applications.

Product Note This antibody is not capable of immunoprecipitating HBx complexed with HBx interacting protein (XIP).

Properties

Form	Liquid
Buffer	PBS
Preservative	0.05% Sodium azide
Storage	Store as concentrated solution. Centrifuge briefly prior to opening vial. For short-term storage (1-2 weeks), store at 4°C. For long-term storage, aliquot and store at -20°C or below. Avoid multiple freeze-thaw cycles.
Concentration	1 mg/ml (Please refer to the vial label for the specific concentration.)
Immunogen	Baculovirus expressed recombinant HBx.
Purification	Purified by HPLC
Conjugation	Unconjugated



For full product information, images and publications, please visit our [website](#).

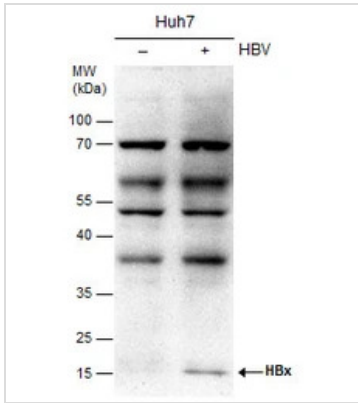
Date 2025 / 05 / 27 Page 1 of 2

For laboratory research use only. Not for any clinical, therapeutic, or diagnostic use in humans or animals. Not for animal or human consumption.

Note

Purchasers shall not, and agree not to enable third parties to, analyze, copy, reverse engineer or otherwise attempt to determine the structure or sequence of the product.

DATA IMAGES



GTX22741 WB Image

Non-transfected (–) and transfected (+) Huh7 whole cell extracts (25 µg) were separated by 12% SDS-PAGE, and the membrane was blotted with Hepatitis B Virus X Protein antibody [X36C] (GTX22741) diluted at 1:1000.



For full product information, images and publications, please visit our [website](#).