

# Androgen Receptor antibody [AN1-15]

**Cat. No. GTX22742**

<b>Host</b>	Rat
<b>Clonality</b>	Monoclonal
<b>Isotype</b>	IgG
<b>Applications</b>	WB, ICC/IF, IHC-P, IHC-Fr, IP, Gel supershift assays, IHC
<b>Reactivity</b>	Human, Mouse, Rat, Primate

References ( 4 )

Package

50 µg

## Applications

### Application Note

\*Optimal dilutions/concentrations should be determined by the researcher.

Suggested dilution	Recommended dilution
WB	1:50-1:500
ICC/IF	5 µg/ml
IHC-P	2-4 µg/mL
IHC-Fr	2-4 µg/mL
IP	Assay dependent
Gel supershift assays	Assay dependent
IHC	Assay dependent

Not tested in other applications.

**Calculated MW** 99 kDa. ( [Note](#) )

**Product Note** This product does not cross-react with estrogen, progesterone, or glucocorticoid receptors.

## Properties

<b>Form</b>	Liquid
<b>Buffer</b>	PBS
<b>Preservative</b>	0.05% Sodium azide
<b>Storage</b>	Store as concentrated solution. Centrifuge briefly prior to opening vial. For short-term storage (1-2 weeks), store at 4°C. For long-term storage, aliquot and store at -20°C or below. Avoid multiple freeze-thaw cycles.
<b>Concentration</b>	Batch dependent (Please refer to the vial label for the specific concentration.)
<b>Immunogen</b>	A fusion protein corresponding to residues 331-572 of human androgen receptor.
<b>Purification</b>	Protein A purified



For full product information, images and publications, please visit our [website](#).

## Conjugation

Unconjugated

## Note

For laboratory research use only. Not for any clinical, therapeutic, or diagnostic use in humans or animals. Not for animal or human consumption.

Purchasers shall not, and agree not to enable third parties to, analyze, copy, reverse engineer or otherwise attempt to determine the structure or sequence of the product.

## DATA IMAGES



### GTX22742 IHC-P Image

IHC-P analysis of human prostate tissue using GTX22742 Androgen Receptor antibody [AN1-15].

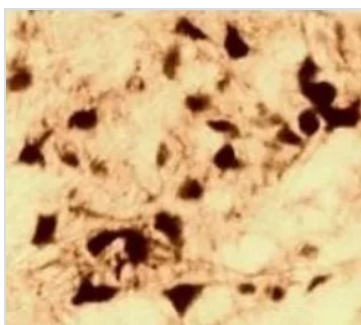
A : isotype control

B : Primary antibody

C : Primary antibody with magnified section

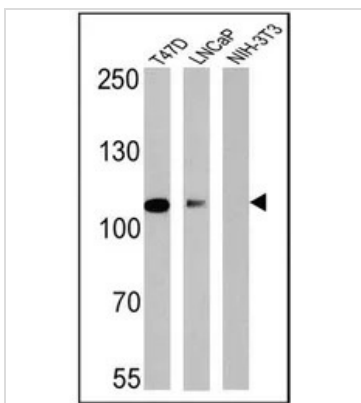
Antigen retrieval : HEIR with a buffer (pH 6.2)

Dilution : 2 µg/ml



### GTX22742 IHC-P Image

IHC-P analysis of primate brain tissue using GTX22742 Androgen Receptor antibody [AN1-15].



### GTX22742 WB Image

WB analysis of 25 ug of T47D (lane 1), LNCaP (lane 2) and NIH-3T3 (lane 3) lysates using GTX22742 Androgen Receptor antibody [AN1-15].

Dilution : 1:100



For full product information, images and publications, please visit our [website](https://www.genetex.com).