

Thyroid Hormone Receptor antibody [C3]

Cat. No. GTX22743

Host	Mouse
Clonality	Monoclonal
Isotype	IgG1
Applications	WB, ICC/IF, IHC-P, IP, Gel supershift assays
Reactivity	Human, Mouse, Rat, Xenopus, Primate

References (1)

Package

100 µl

Applications

Application Note

*Optimal dilutions/concentrations should be determined by the researcher.

Suggested dilution	Recommended dilution
WB	1:1,000
ICC/IF	1:20
IHC-P	1:20
IP	Assay dependent
Gel supershift assays	Assay dependent

Not tested in other applications.

Product Note

This antibody recognizes TR beta-1 and also cross-reacts with TR alpha-1. This antibody recognizes an epitope in the hormone binding domain of hTR beta-1, amino acid residues 235-414.

Properties

Form	Liquid
Buffer	Ascites
Preservative	0.05% Sodium azide
Storage	Store as concentrated solution. Centrifuge briefly prior to opening vial. For short-term storage (1-2 weeks), store at 4°C. For long-term storage, aliquot and store at -20°C or below. Avoid multiple freeze-thaw cycles.
Immunogen	Purified fragment of human TR beta-1 corresponding to residues 201-456.
Purification	Unpurified
Conjugation	Unconjugated



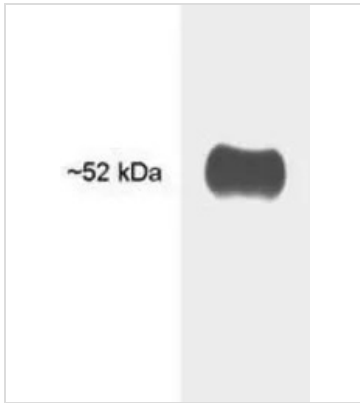
For full product information, images and publications, please visit our [website](#).

For laboratory research use only. Not for any clinical, therapeutic, or diagnostic use in humans or animals. Not for animal or human consumption.

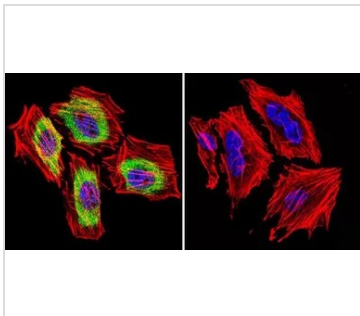
Note

Purchasers shall not, and agree not to enable third parties to, analyze, copy, reverse engineer or otherwise attempt to determine the structure or sequence of the product.

DATA IMAGES

**GTx22743 WB Image**

WB analysis of samples using GTx22743 Thyroid Hormone Receptor antibody [C3].

**GTx22743 ICC/IF Image**

ICC/IF analysis of HeLa cells using GTx22743 Thyroid Hormone Receptor antibody [C3]. Cells were probed without (right) or with(left) an antibody.

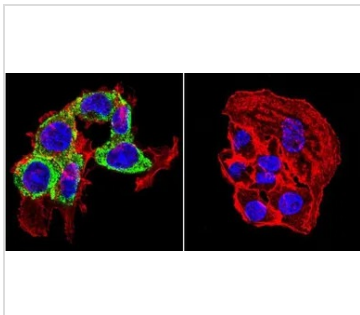
Green : Primary antibody

Blue : Nuclei

Red : Actin

Fixation : formaldehyde

Dilution : 1:20 overnight at 4°C

**GTx22743 ICC/IF Image**

ICC/IF analysis of HepG2 cells using GTx22743 Thyroid Hormone Receptor antibody [C3]. Cells were probed without (right) or with(left) an antibody.

Green : Primary antibody

Blue : Nuclei

Red : Actin

Fixation : formaldehyde

Dilution : 1:20 overnight at 4°C



For full product information, images and publications, please visit our [website](#).