

Thyroid Hormone Receptor beta antibody [J52]

Cat. No. GTX22744

Host	Mouse
Clonality	Monoclonal
Isotype	IgG1
Applications	WB, ICC/IF, IHC-P, IP, ChIP assay, Gel supershift assays, IHC
Reactivity	Human, Mouse, Rat

Package
100 µl

Applications

Application Note

*Optimal dilutions/concentrations should be determined by the researcher.

Suggested dilution	Recommended dilution
WB	1:1,000
ICC/IF	1:20-1:500
IHC-P	1:20
IP	Assay dependent
ChIP assay	Assay dependent
Gel supershift assays	Assay dependent
IHC	Assay dependent

Not tested in other applications.

Calculated MW 53 kDa. ([Note](#))

Product Note This antibody is specific for the TR beta-1 isoform. This antibody recognizes an epitope in the A/B domain of human TR beta-1, amino acid residues 1-101.

Properties

Form	Liquid
Buffer	PBS, 0.1% BSA
Preservative	0.05% Sodium azide
Storage	Store as concentrated solution. Centrifuge briefly prior to opening vial. For short-term storage (1-2 weeks), store at 4°C. For long-term storage, aliquot and store at -20°C or below. Avoid multiple freeze-thaw cycles.
Concentration	1 mg/ml (Please refer to the vial label for the specific concentration.)
Immunogen	Purified human TR beta -1 protein.
Purification	Protein A purified



For full product information, images and publications, please visit our [website](#).

Conjugation

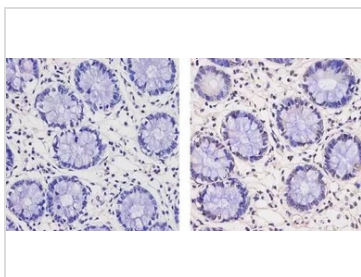
Unconjugated

Note

For laboratory research use only. Not for any clinical, therapeutic, or diagnostic use in humans or animals. Not for animal or human consumption.

Purchasers shall not, and agree not to enable third parties to, analyze, copy, reverse engineer or otherwise attempt to determine the structure or sequence of the product.

DATA IMAGES



GTx22744 IHC-P Image

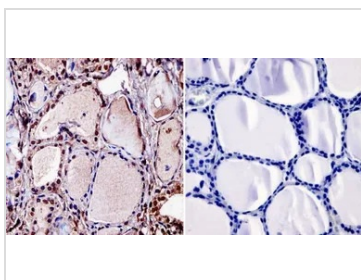
IHC-P analysis of human colon tissue using GTx22744 Thyroid Hormone Receptor beta antibody [J52].

Right : Primary antibody

Left : Negative control without primary antibody

Antigen retrieval : 10mM sodium citrate (pH 6.0), microwaved for 8-15 min

Dilution : 1:20



GTx22744 IHC-P Image

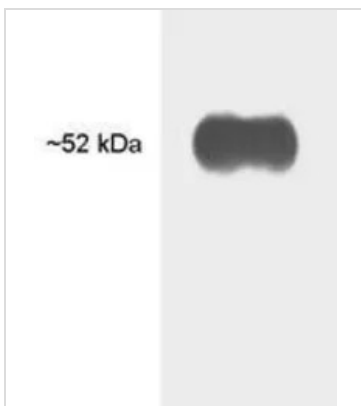
IHC-P analysis of human thyroid tissue using GTx22744 Thyroid Hormone Receptor beta antibody [J52].

Left : Primary antibody

Right : Negative control without primary antibody

Antigen retrieval : heat induced antigen retrieval was performed using 10mM sodium citrate (pH6.0) buffer, microwaved for 8-15 minutes

Dilution : 1:20



GTx22744 WB Image

WB analysis of samples using GTx22744 Thyroid Hormone Receptor beta antibody [J52].



For full product information, images and publications, please visit our [website](https://www.genetex.com).