

## Estrogen Receptor alpha antibody [33]

Cat. No. GTX22746

Host	Mouse
Clonality	Monoclonal
Isotype	IgG1
Application	WB, ICC/IF, IHC-P, FACS, IP, Gel supershift assays, IHC
Reactivity	Human, Mouse, Rat, Bovine, Japanese Medaka, Primate, Avian

Reference ( 5 )  
Package  
50 µg

## APPLICATION

## Application Note

\*Optimal dilutions/concentrations should be determined by the researcher.

Suggested dilution	Recommended dilution
WB	4 µg/ml
ICC/IF	10 µg/ml
IHC-P	Assay dependent
FACS	Assay dependent
IP	Assay dependent
Gel supershift assays	Assay dependent
IHC	1:20 - 1:100

Not tested in other applications.

Calculated MW 66 kDa. ( [Note](#) )

## Product Note

This antibody detects both the steroid occupied and unoccupied forms of the estrogen receptor (ER) alpha from human samples. It detects ER alpha and does not cross react with ER beta.

## PROPERTIES

Form	Liquid
Buffer	PBS, 0.1% BSA, 30% Glycerol
Preservative	0.05% Sodium azide
Storage	Store as concentrated solution. Centrifuge briefly prior to opening vial. For short-term storage (1-2 weeks), store at 4°C. For long-term storage, aliquot and store at -20°C or below. Avoid multiple freeze-thaw cycles.
Concentration	1 mg/ml (Please refer to the vial label for the specific concentration.)
Immunogen	Synthetic peptide corresponding to the residues E(247) V G M M K G G I R K D R R G(261) of the ER alpha DNA binding domain.



For full product information, images and publications, please visit our [website](#).

**Purification** Protein G purified

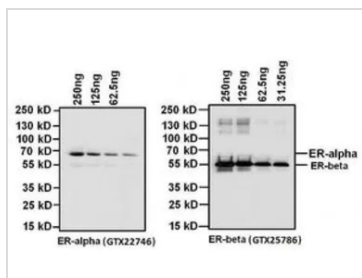
**Conjugation** Unconjugated

**Note**

For laboratory research use only. Not for any clinical, therapeutic, or diagnostic use in humans or animals. Not for animal or human consumption.

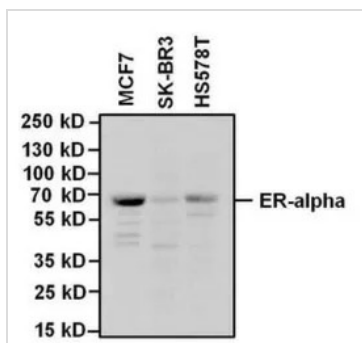
Purchasers shall not, and agree not to enable third parties to, analyze, copy, reverse engineer or otherwise attempt to determine the structure or sequence of the product.

**DATA IMAGES**



**GTX22746 WB Image**

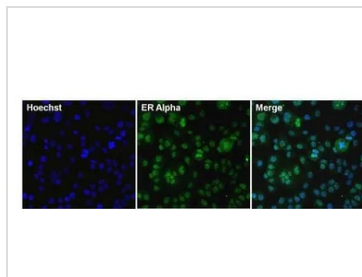
WB analysis of full-length human ER alpha recombinant protein and ER beta protein using GTX22746 Estrogen Receptor alpha antibody [33] at 4 µg/ml (left panel) or GTX25786 Estrogen Receptor beta antibody at 1:2000 (right panel).



**GTX22746 WB Image**

WB analysis of 25 ug of the indicated whole cell lysates using GTX22746 Estrogen Receptor alpha antibody [33].

Dilution : 4 µg/ml



**GTX22746 ICC/IF Image**

ICC/IF analysis of T-47D cells using GTX22746 Estrogen Receptor alpha antibody [33].

Fixation : Formalin

Permeabilization : 0.1% Triton X-100 in TBS for 10 minutes

Dilution : 10 µg/ml overnight at 4°C



For full product information, images and publications, please visit our [website](https://www.genetex.com).