

## KLF8 antibody

Cat. No. GTX22747

<b>Host</b>	Goat
<b>Clonality</b>	Polyclonal
<b>Isotype</b>	IgG
<b>Applications</b>	WB, IHC-P
<b>Reactivity</b>	Human

## Package

50 µg

## Applications

## Application Note

\*Optimal dilutions/concentrations should be determined by the researcher.

Suggested dilution	Recommended dilution
WB	1-3µg/ml
IHC-P	3.75µg/ml

Not tested in other applications.

<b>Calculated MW</b>	39 kDa. ( <a href="#">Note</a> )
<b>Product Note</b>	This antibody is expected to recognise isoform 1 (NP_009181.2) and isoform 2 (NP_001152768.1).

## Properties

<b>Form</b>	Liquid
<b>Buffer</b>	TBS, 0.5% BSA
<b>Preservative</b>	0.02% Sodium azide
<b>Storage</b>	Store as concentrated solution. Centrifuge briefly prior to opening vial. For short-term storage (1-2 weeks), store at 4°C. For long-term storage, aliquot and store at -20°C or below. Avoid multiple freeze-thaw cycles.
<b>Concentration</b>	0.50 mg/ml (Please refer to the vial label for the specific concentration.)
<b>Immunogen</b>	Peptide with sequence VDMDKLINNLEVQ-C, from the N Terminus of the protein sequence according to NP_009181.2; NP_001152768.1.
<b>Purification</b>	Purified by ammonium sulphate precipitation followed by antigen affinity chromatography
<b>Conjugation</b>	Unconjugated

## Note

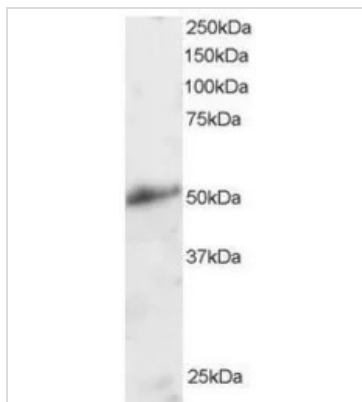
For laboratory research use only. Not for any clinical, therapeutic, or diagnostic use in humans or animals. Not for animal or human consumption.

Purchasers shall not, and agree not to enable third parties to, analyze, copy, reverse engineer or otherwise attempt to determine the structure or sequence of the product.



For full product information, images and publications, please visit our [website](#).

## DATA IMAGES

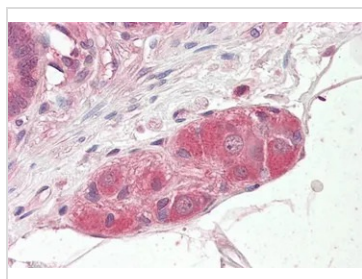


### GTX22747 WB Image

WB analysis of human kidney lysate using GTX22747 KLF8 antibody.

Dilution : 2 $\mu$ g/ml

Loading : 30 $\mu$ g protein in RIPA buffer



### GTX22747 IHC-P Image

IHC-P analysis of human small intestine using GTX22747 KLF8 antibody.

Antigen retrieval : citrate buffer pH 6

Dilution : 3.75 $\mu$ g/ml



For full product information, images and publications, please visit our [website](#).