

## Progesterone Receptor antibody [Alpha PR6]

**Cat. No. GTX22765**

<b>Host</b>	Mouse
<b>Clonality</b>	Monoclonal
<b>Isotype</b>	IgG2a
<b>Applications</b>	WB, ICC/IF, IHC-P, IHC-Fr, IP, ChIP assay
<b>Reactivity</b>	Human, Mouse, Rat, Rabbit, Sheep, Bovine, Chicken, Guinea pig, Camelid, Primate

References ( 5 )

Package

100 µg

## Applications

**Application Note**

\*Optimal dilutions/concentrations should be determined by the researcher.

Suggested dilution	Recommended dilution
WB	1 µg/ml
ICC/IF	10 µg/ml
IHC-P	5 µg/ml
IHC-Fr	20 µg/ml
IP	Assay dependent
ChIP assay	Assay dependent

Not tested in other applications.

**Calculated MW** 86 kDa. ( [Note](#) )**Product Note** This antibody does detects the B form of the progesterone receptor. It does not cross-react with estrogen receptor or glucocorticoid receptor.

## Properties

<b>Form</b>	Liquid
<b>Buffer</b>	buffer
<b>Preservative</b>	0.05% Sodium azide
<b>Storage</b>	Store as concentrated solution. Centrifuge briefly prior to opening vial. For short-term storage (1-2 weeks), store at 4°C. For long-term storage, aliquot and store at -20°C or below. Avoid multiple freeze-thaw cycles.
<b>Concentration</b>	Batch dependent (Please refer to the vial label for the specific concentration.)
<b>Immunogen</b>	Progesterone receptor purified from chick oviduct cytosol.
<b>Purification</b>	Protein A purified

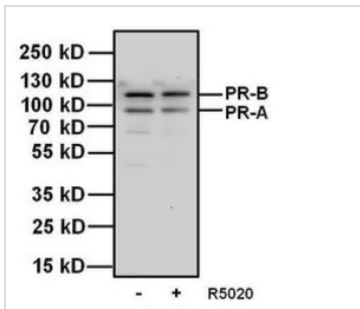
For full product information, images and publications, please visit our [website](#).

**Conjugation** Unconjugated

For laboratory research use only. Not for any clinical, therapeutic, or diagnostic use in humans or animals. Not for animal or human consumption.

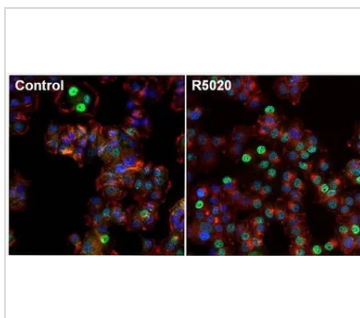
**Note** Purchasers shall not, and agree not to enable third parties to, analyze, copy, reverse engineer or otherwise attempt to determine the structure or sequence of the product.

DATA IMAGES



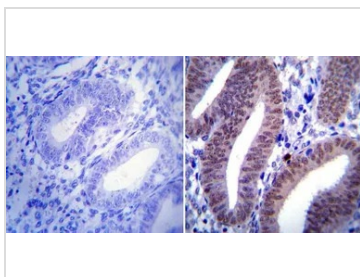
**GTX22765 WB Image**

WB analysis of 20 ug of T47D cell lysates, untreated (-) or stimulated (+) with 100 nm promegestone for 1 hour using GTX22765 Progesterone Receptor antibody [Alpha PR6].  
Dilution : 1 µg/ml



**GTX22765 ICC/IF Image**

ICC/IF analysis of T47D cells untreated (left) or stimulated with 100nm promegestone, R5020, for 1 hour using GTX22765 Progesterone Receptor antibody [Alpha PR6].  
Green : Primary antibody  
Blue : Nuclei  
Red : Actin  
Fixation : Formalin  
Permeabilization : 0.1% Triton X-100 in TBS for 10 minutes



**GTX22765 IHC-P Image**

IHC-P analysis of human uterus tissue using GTX22765 Progesterone Receptor antibody [Alpha PR6].  
Antigen retrieval : 10mM sodium citrate followed by microwave treatment for 8-15 minutes.  
Dilution : 1:20



For full product information, images and publications, please visit our [website](#).