

Progesterone Receptor antibody [Alpha PR6]

Cat. No. GTX22765

Host	Mouse
Clonality	Monoclonal
Isotype	IgG2a
Applications	WB, ICC/IF, IHC-P, IHC-Fr, IP, ChIP assay
Reactivity	Human, Mouse, Rat, Rabbit, Sheep, Bovine, Chicken, Guinea pig, Camelid, Primate

References (5)

Package

100 µg

Applications

Application Note

*Optimal dilutions/concentrations should be determined by the researcher.

Suggested dilution	Recommended dilution
WB	1 µg/ml
ICC/IF	10 µg/ml
IHC-P	5 µg/ml
IHC-Fr	20 µg/ml
IP	Assay dependent
ChIP assay	Assay dependent

Not tested in other applications.

Calculated MW 86 kDa. ([Note](#))**Product Note** This antibody does detects the B form of the progesterone receptor. It does not cross-react with estrogen receptor or glucocorticoid receptor.

Properties

Form	Liquid
Buffer	buffer
Preservative	0.05% Sodium azide
Storage	Store as concentrated solution. Centrifuge briefly prior to opening vial. For short-term storage (1-2 weeks), store at 4°C. For long-term storage, aliquot and store at -20°C or below. Avoid multiple freeze-thaw cycles.
Concentration	Batch dependent (Please refer to the vial label for the specific concentration.)
Immunogen	Progesterone receptor purified from chick oviduct cytosol.
Purification	Protein A purified



For full product information, images and publications, please visit our [website](#).

Conjugation

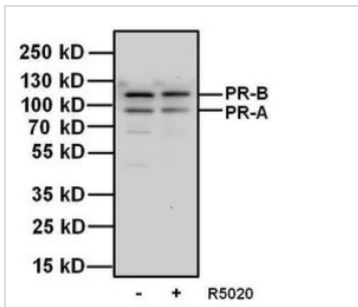
Unconjugated

For laboratory research use only. Not for any clinical, therapeutic, or diagnostic use in humans or animals. Not for animal or human consumption.

Note

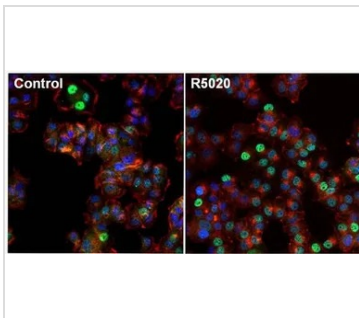
Purchasers shall not, and agree not to enable third parties to, analyze, copy, reverse engineer or otherwise attempt to determine the structure or sequence of the product.

DATA IMAGES

**GTX22765 WB Image**

WB analysis of 20 ug of T47D cell lysates, untreated (-) or stimulated (+) with 100 nm promegestone for 1 hour using GTX22765 Progesterone Receptor antibody [Alpha PR6].

Dilution : 1 µg/ml

**GTX22765 ICC/IF Image**

ICC/IF analysis of T47D cells untreated (left) or stimulated with 100nm promegestone, R5020, for 1 hour using GTX22765 Progesterone Receptor antibody [Alpha PR6].

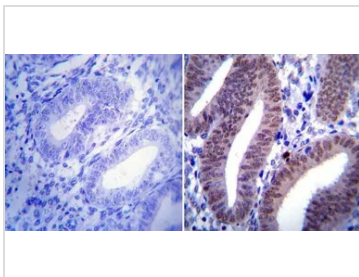
Green : Primary antibody

Blue : Nuclei

Red : Actin

Fixation : Formalin

Permeabilization : 0.1% Triton X-100 in TBS for 10 minutes

**GTX22765 IHC-P Image**

IHC-P analysis of human uterus tissue using GTX22765 Progesterone Receptor antibody [Alpha PR6].

Antigen retrieval : 10mM sodium citrate followed by microwave treatment for 8-15 minutes.

Dilution : 1:20



For full product information, images and publications, please visit our [website](#).