

## Progesterone Receptor antibody [alpha PR-22]

Cat. No. GTX22767

Host	Mouse
Clonality	Monoclonal
Isotype	IgG2b
Applications	WB, ICC/IF, IP, Gel supershift assays
Reactivity	Human, Mouse, Rabbit, Chicken

Package  
100 µg

## Applications

## Application Note

\*Optimal dilutions/concentrations should be determined by the researcher.

Suggested dilution	Recommended dilution
WB	1 µg/ml
ICC/IF	10 µg/ml
IP	Assay dependent
Gel supershift assays	Assay dependent

Not tested in other applications.

Calculated MW	86 kDa. ( <a href="#">Note</a> )
Product Note	This antibody detects the A and B forms of progesterone receptor. It does not cross-react with estrogen receptor or glucocorticoid receptor.

## Properties

Form	Liquid
Buffer	PBS
Preservative	0.05% Sodium azide
Storage	Store as concentrated solution. Centrifuge briefly prior to opening vial. For short-term storage (1-2 weeks), store at 4°C. For long-term storage, aliquot and store at -20°C or below. Avoid multiple freeze-thaw cycles.
Concentration	Batch dependent (Please refer to the vial label for the specific concentration.)
Immunogen	Progesterone receptor purified from chick oviduct cytosol.
Purification	Purified IgG
Conjugation	Unconjugated



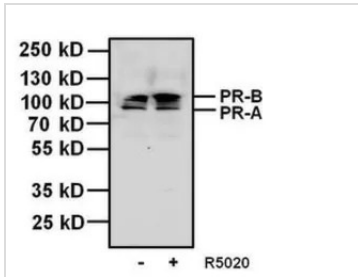
For full product information, images and publications, please visit our [website](#).

For laboratory research use only. Not for any clinical, therapeutic, or diagnostic use in humans or animals. Not for animal or human consumption.

## Note

Purchasers shall not, and agree not to enable third parties to, analyze, copy, reverse engineer or otherwise attempt to determine the structure or sequence of the product.

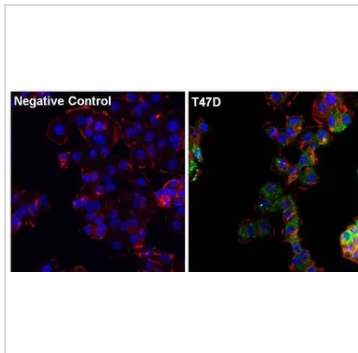
## DATA IMAGES



### GTx22767 WB Image

WB analysis of 20 ug of T47D cell lysates, untreated (-) or stimulated (+) with 100 nm promegestone for 1 hour using GTx22767 Progesterone Receptor antibody [alpha PR-22].

Dilution : 1 µg/ml



### GTx22767 ICC/IF Image

ICC/IF analysis of T-47D cells using GTx22767 Progesterone Receptor antibody [alpha PR-22]. Cells were probed without (left) or with(right) an antibody.

Green : Primary antibody

Blue : Nuclei

Red : Actin

Fixation : Formalin

Permeabilization : 0.1% Triton X-100 in TBS for 10 minutes

Dilution : 1:100 for 1 hour at room temperature



For full product information, images and publications, please visit our [website](https://www.genetex.com).