

AHR antibody [RPT9]

Cat. No. GTX22769

Host	Mouse
Clonality	Monoclonal
Isotype	IgG3
Applications	WB, ICC/IF, IHC-Fr, FCM, IP, ELISA, ChIP assay, Gel supershift assays, IHC
Reactivity	Human, Mouse, Rat

References (3)

Package

100 µl

Applications

Application Note

*Optimal dilutions/concentrations should be determined by the researcher.

Suggested dilution	Recommended dilution
WB	1:500 - 1:2000
ICC/IF	1:10-1:100
IHC-Fr	Assay dependent
FCM	1:50
IP	Assay dependent
ELISA	Assay dependent
ChIP assay	1:100
Gel supershift assays	Assay dependent
IHC	Assay dependent

Note : Permeabilization : 0.2% Triton X-100 in PBS for 30 min at RT.

Not tested in other applications.

Properties

Form	Liquid
Buffer	buffer
Preservative	0.05% Sodium azide
Storage	Store as concentrated solution. Centrifuge briefly prior to opening vial. For short-term storage (1-2 weeks), store at 4°C. For long-term storage, aliquot and store at -20°C or below. Avoid multiple freeze-thaw cycles.
Concentration	1 mg/ml (Please refer to the vial label for the specific concentration.)
Immunogen	Synthetic peptide corresponding to residues R(12) K R R K P(17) V(22) K P I P A E G I K(31) of mouse AhR.
Purification	Protein A purified



For full product information, images and publications, please visit our [website](#).

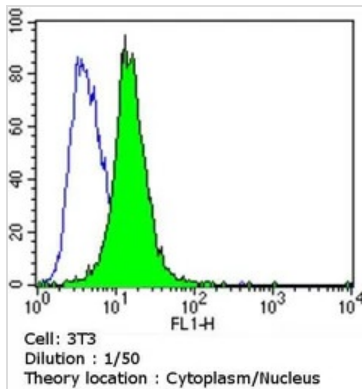
Conjugation

Unconjugated

For laboratory research use only. Not for any clinical, therapeutic, or diagnostic use in humans or animals. Not for animal or human consumption.

Note

Purchasers shall not, and agree not to enable third parties to, analyze, copy, reverse engineer or otherwise attempt to determine the structure or sequence of the product.

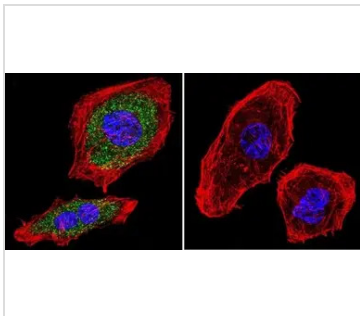
DATA IMAGES

GTX22769 FCM Image

FACS analysis of NIH/3T3 cells using GTX22769 AHR antibody [RPT9] compared to an isotype control (blue).

Dilution : 1:50 for 60 min at room temperature

Fixation : 2% paraformaldehyde

Permeabilization : 90% methanol and incubated for 10 minutes at room temperature


GTX22769 Image

ICC/IF analysis of U251 Cells using GTX22769 AHR antibody [RPT9]. Cells were probed without (right) or with (left) an antibody.

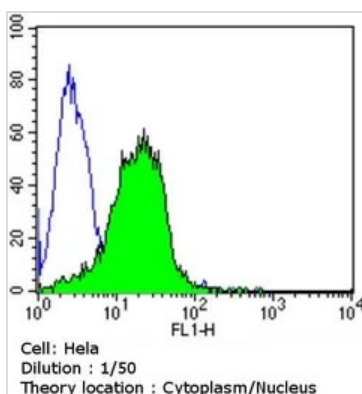
Green : Primary antibody

Blue : Nuclei

Red : Actin

Fixation : formaldehyde

Dilution : 1:20 overnight at 4°C


GTX22769 FCM Image

FACS analysis of HeLa cells using GTX22769 AHR antibody

Dilution : 1:50 for 60 min at room temperature

Fixation : 2% paraformaldehyde

Permeabilization : 90% methanol and incubated for 10 minutes at room temperature [RPT9] compared to an isotype control (blue).



For full product information, images and publications, please visit our [website](http://www.genetex.com).