

AHR antibody [RPT1]

Cat. No. GTX22770

Host	Mouse
Clonality	Monoclonal
Isotype	IgG1
Applications	WB, ICC/IF, IHC-P, IP, ELISA, ChIP assay
Reactivity	Human, Mouse, Rat, Pig, Primate

References (11)

Package

100 µl

Applications

Application Note

*Optimal dilutions/concentrations should be determined by the researcher.

Suggested dilution	Recommended dilution
WB	1:500 - 1:2000
ICC/IF	1:100-1:1000
IHC-P	1:10 - 1:100
IP	Assay dependent
ELISA	Assay dependent
ChIP assay	Assay dependent

Not tested in other applications.

Calculated MW 96 kDa. ([Note](#))

Properties

Form	Liquid
Buffer	PBS, 0.1% BSA
Preservative	0.05% Sodium azide
Storage	Store as concentrated solution. Centrifuge briefly prior to opening vial. For short-term storage (1-2 weeks), store at 4°C. For long-term storage, aliquot and store at -20°C or below. Avoid multiple freeze-thaw cycles.
Concentration	1 mg/ml (Please refer to the vial label for the specific concentration.)
Immunogen	Synthetic peptide corresponding to residues R(12) K R R K P(17) V(22) K P I P A E G I K(31) of human AhR.
Purification	Protein G purified
Conjugation	Unconjugated

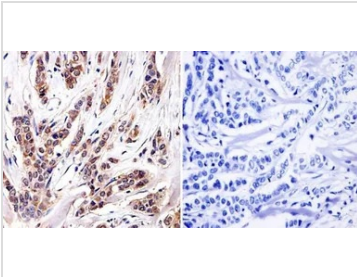


For full product information, images and publications, please visit our [website](#).

For laboratory research use only. Not for any clinical, therapeutic, or diagnostic use in humans or animals. Not for animal or human consumption.

Note

Purchasers shall not, and agree not to enable third parties to, analyze, copy, reverse engineer or otherwise attempt to determine the structure or sequence of the product.

DATA IMAGES

GTX22770 IHC-P Image

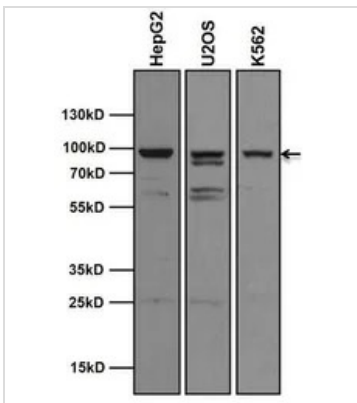
IHC-P analysis of human breast carcinoma tissue using GTX22770 AHR antibody [RPT1].

Left : Primary antibody

Right : Negative control without primary antibody

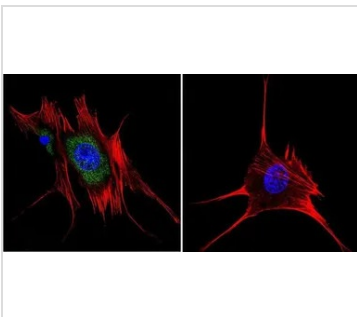
Antigen retrieval : heat induced antigen retrieval was performed using 10mM sodium citrate (pH6.0) buffer, microwaved for 8-15 minutes

Dilution : 1:100


GTX22770 WB Image

WB analysis of 20 ug of HepG2, U2OS, and K562 whole cell lysates using GTX22770 AHR antibody [RPT1].

Dilution : 1:1000


GTX22770 ICC/IF Image

ICC/IF analysis of NIH-3T3 cells using GTX22770 AHR antibody [RPT1]. Cells were probed without (right) or with (left) an antibody.

Green : Primary antibody

Blue : Nuclei

Red : Actin

Fixation : formaldehyde

Dilution : 1:200 overnight at 4°C



For full product information, images and publications, please visit our [website](https://www.genetex.com).