

## HIF1 beta antibody [2B10]

Cat. No. GTX22771

Host	Mouse
Clonality	Monoclonal
Isotype	IgG1
Application	WB, ICC/IF, IHC-P, IP, Gel supershift assays, IHC
Reactivity	Human, Mouse, Rat, Xenopus, Fish, Primate

Reference ( 7 )  
Package  
100 µl

## APPLICATION

## Application Note

\*Optimal dilutions/concentrations should be determined by the researcher.

Suggested dilution	Recommended dilution
WB	1:500-1:3000
ICC/IF	1:1,000
IHC-P	5 µg/ml
IP	Assay dependent
Gel supershift assays	Assay dependent
IHC	Assay dependent

Not tested in other applications.

Calculated MW 87 kDa. ( [Note](#) )

## PROPERTIES

Form	Liquid
Buffer	PBS, 0.1% BSA
Preservative	0.05% Sodium azide
Storage	Store as concentrated solution. Centrifuge briefly prior to opening vial. For short-term storage (1-2 weeks), store at 4°C. For long-term storage, aliquot and store at -20°C or below. Avoid multiple freeze-thaw cycles.
Concentration	1 mg/ml (Please refer to the vial label for the specific concentration.)
Immunogen	Synthetic peptide corresponding to residues C N(771) S Y N N E E F P D L T M F P P F S E(789) of human ARNT.
Purification	Purified IgG
Conjugation	Unconjugated

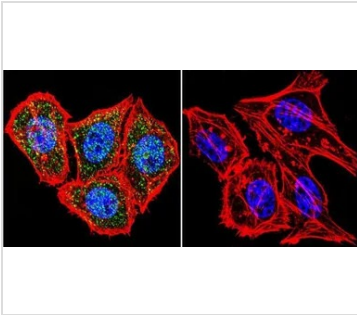


For full product information, images and publications, please visit our [website](#).

For laboratory research use only. Not for any clinical, therapeutic, or diagnostic use in humans or animals. Not for animal or human consumption.

**Note**

Purchasers shall not, and agree not to enable third parties to, analyze, copy, reverse engineer or otherwise attempt to determine the structure or sequence of the product.

**DATA IMAGES**

**GTX22771 ICC/IF Image**

ICC/IF analysis of HeLa cells using GTX22771 HIF1 beta antibody [2B10]. Cells were probed without (right) or with(left) an antibody.

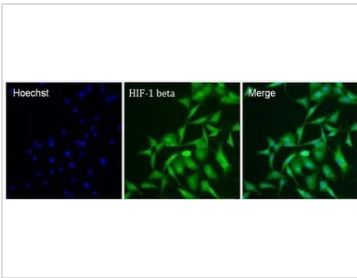
Green : Primary antibody

Blue : Nuclei

Red : Actin

Fixation : formaldehyde

Dilution : 1:20 overnight at 4°C

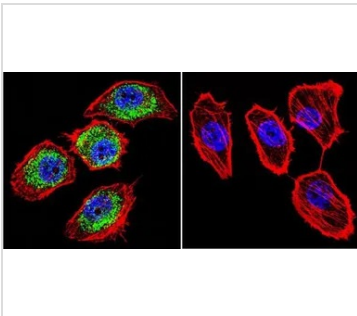

**GTX22771 ICC/IF Image**

ICC/IF analysis of NRK cells using GTX22771 HIF1 beta antibody [2B10].

Fixation : 4% paraformaldehyde

Permeabilization : 0.1% Triton X-100 in PBS for 15 minutes

Dilution : 40 µg/ml in staining buffer for 1 hour at room temperature


**GTX22771 ICC/IF Image**

ICC/IF analysis of U251 cells using GTX22771 HIF1 beta antibody [2B10]. Cells were probed without (right) or with(left) an antibody.

Green : Primary antibody

Blue : Nuclei

Red : Actin

Fixation : formaldehyde

Dilution : 1:100 overnight at 4 °C



For full product information, images and publications, please visit our [website](https://www.genetex.com).