

Prolactin Receptor antibody [U5]

Cat. No. GTX22772

Host	Mouse
Clonality	Monoclonal
Isotype	IgG1
Application	WB, ICC/IF, IHC-P, IHC-Fr, FACS, IP, Neutralizing/Inhibition
Reactivity	Human, Mouse, Rat, Rabbit, Bovine, Hamster, Pig, Horse, Primate

Reference (1)
Package
100 µg

APPLICATION

Application Note

*Optimal dilutions/concentrations should be determined by the researcher.

Suggested dilution	Recommended dilution
WB	1 µg/ml
ICC/IF	5 µg/ml
IHC-P	Assay dependent
IHC-Fr	Assay dependent
FACS	Assay dependent
IP	Assay dependent
Neutralizing/Inhibition	Assay dependent

Not tested in other applications.

Calculated MW 69 kDa. ([Note](#))

Product Note This antibody has been shown to react with the extracellular portion of the receptor, but not in the ligand binding domain.

PROPERTIES

Form	Liquid
Buffer	PBS
Preservative	0.05% Sodium azide
Storage	Store as concentrated solution. Centrifuge briefly prior to opening vial. For short-term storage (1-2 weeks), store at 4°C. For long-term storage, aliquot and store at -20°C or below. Avoid multiple freeze-thaw cycles.
Concentration	1 mg/ml (Please refer to the vial label for the specific concentration.)
Immunogen	Purified rat liver PRL receptor.
Purification	Protein G purified



For full product information, images and publications, please visit our [website](#).

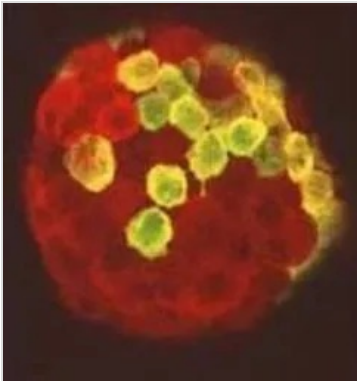
Conjugation

Unconjugated

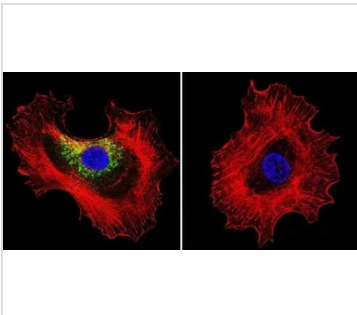
Note

For laboratory research use only. Not for any clinical, therapeutic, or diagnostic use in humans or animals. Not for animal or human consumption.

Purchasers shall not, and agree not to enable third parties to, analyze, copy, reverse engineer or otherwise attempt to determine the structure or sequence of the product.

DATA IMAGES

GTX22772 IHC-Fr Image

IHC-Fr analysis of rat Islets of Langerhans using GTX22772 Prolactin Receptor antibody [U5].


GTX22772 ICC/IF Image

ICC/IF analysis of MCF-7 cells using GTX22772 Prolactin Receptor antibody [U5]. Cells were probed without (right) or with (left) an antibody.

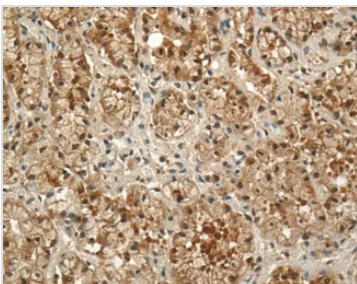
Green : Primary antibody

Blue : Nuclei

Red : Actin

Fixation : formaldehyde

Dilution : 1:20 overnight at 4°C


GTX22772 IHC-P Image

IHC-P analysis of mammary gland tissue from lactating light horse mare using GTX22772 Prolactin Receptor antibody [U5].

Antigen retrieval : 95°C for 20 min in TrizmaR buffer (pH 10.0)

Dilution : 1:100



For full product information, images and publications, please visit our [website](#).