

Prolactin Receptor antibody [T6]

Cat. No. GTX22773

| | |
|--------------|------------------------|
| Host | Mouse |
| Clonality | Monoclonal |
| Isotype | IgG2a |
| Applications | WB, ICC/IF, IHC-P, IHC |
| Reactivity | Human, Mouse, Rat |

References (1)

Package

100 µg

Applications

Application Note

*Optimal dilutions/concentrations should be determined by the researcher.

| Suggested dilution | Recommended dilution |
|--------------------|----------------------|
| WB | 1 µg/ml |
| ICC/IF | 5 µg/ml |
| IHC-P | 1:25-1:200 |
| IHC | Assay dependent |

Not tested in other applications.

Calculated MW 69 kDa. ([Note](#))

Product Note This antibody does not cross-react with PRL receptors from other species nor with growth hormone (GH) receptor.

Properties

| | |
|---------------|--|
| Form | Liquid |
| Preservative | No preservatives |
| Storage | Store as concentrated solution. Centrifuge briefly prior to opening vial. For short-term storage (1-2 weeks), store at 4°C. For long-term storage, aliquot and store at -20°C or below. Avoid multiple freeze-thaw cycles. |
| Concentration | 1 mg/ml (Please refer to the vial label for the specific concentration.) |
| Immunogen | Purified rat liver PRL receptor. |
| Purification | Protein A purified |
| Conjugation | Unconjugated |

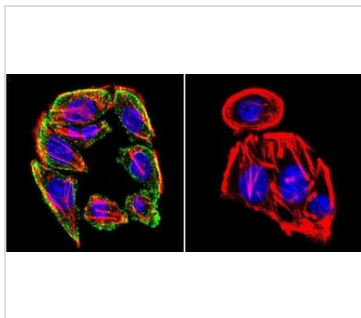
Note

For laboratory research use only. Not for any clinical, therapeutic, or diagnostic use in humans or animals. Not for animal or human consumption.

Purchasers shall not, and agree not to enable third parties to, analyze, copy, reverse engineer or otherwise attempt to determine the structure or sequence of the product.



For full product information, images and publications, please visit our [website](#).

DATA IMAGES

GTX22773 ICC/IF Image

ICC/IF analysis of SW480 Cells using GTX22773 Prolactin Receptor antibody [T6]. Cells were probed without (right) or with(left) an antibody.

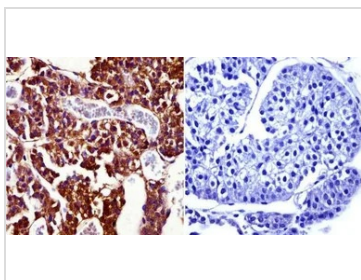
Green : Primary antibody

Blue : Nuclei

Red : Actin

Fixation : formaldehyde

Dilution : 1:200 overnight at 4°C


GTX22773 IHC-P Image

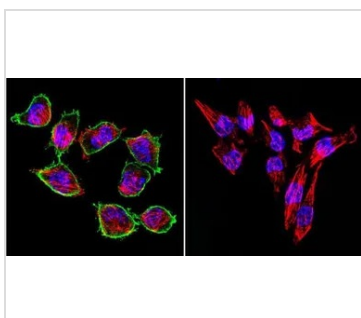
IHC-P analysis of rat pituitary gland tissue using GTX22773 Prolactin Receptor antibody [T6].

Left : Primary antibody

Right : Negative control without primary antibody

Antigen retrieval : heat induced antigen retrieval was performed using 10mM sodium citrate (pH6.0) buffer, microwaved for 8-15 minutes

Dilution : 1:50


GTX22773 ICC/IF Image

ICC/IF analysis of H-4-II-E Cells using GTX22773 Prolactin Receptor antibody [T6]. Cells were probed without (right) or with(left) an antibody.

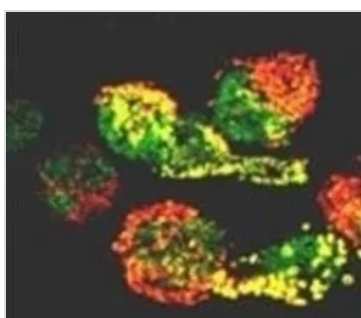
Green : Primary antibody

Blue : Nuclei

Red : Actin

Fixation : formaldehyde

Dilution : 1:200 overnight at 4°C


GTX22773 ICC/IF Image

ICC/IF analysis of NB2 cells using GTX22773 Prolactin Receptor antibody [T6].



For full product information, images and publications, please visit our [website](https://www.genetex.com).