

GRK1 antibody [D11]

Cat. No. GTX22776

Host	Mouse
Clonality	Monoclonal
Isotype	IgG1
Applications	WB, ICC/IF, IHC-Fr, IP, IHC
Reactivity	Human, Mouse, Bovine

Package
100 µg

Applications

Application Note

*Optimal dilutions/concentrations should be determined by the researcher.

Suggested dilution	Recommended dilution
WB	1:1,000
ICC/IF	1:20-1:200
IHC-Fr	1:1,000
IP	Assay dependent
IHC	Assay dependent

Not tested in other applications.

Calculated MW 64 kDa. ([Note](#))

Product Note This antibody does not cross-react with other G protein-coupled kinases. It recognizes an N-terminal epitope of human GRK1 which is conserved in both GRK1a and GRK1b.

Properties

Form	Liquid
Buffer	buffer
Preservative	0.05% Sodium azide
Storage	Store as concentrated solution. Centrifuge briefly prior to opening vial. For short-term storage (1-2 weeks), store at 4°C. For long-term storage, aliquot and store at -20°C or below. Avoid multiple freeze-thaw cycles.
Concentration	1 mg/ml (Please refer to the vial label for the specific concentration.)
Immunogen	Full length human GRK1.
Purification	Protein G purified
Conjugation	Unconjugated

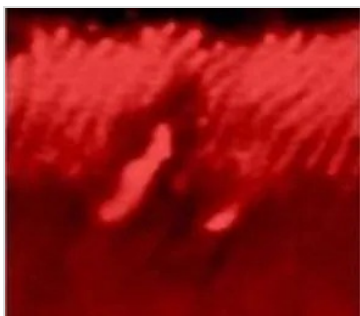


For full product information, images and publications, please visit our [website](#).

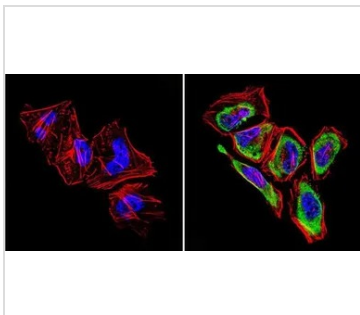
For laboratory research use only. Not for any clinical, therapeutic, or diagnostic use in humans or animals. Not for animal or human consumption.

Note

Purchasers shall not, and agree not to enable third parties to, analyze, copy, reverse engineer or otherwise attempt to determine the structure or sequence of the product.

DATA IMAGES

GTX22776 IHC-Fr Image

IHC-Fr analysis of bovine retina tissue using GTX22776 GRK1 antibody [D11].


GTX22776 ICC/IF Image

ICC/IF analysis of human cells using GTX22776 GRK1 antibody [D11].

Green : Primary antibody

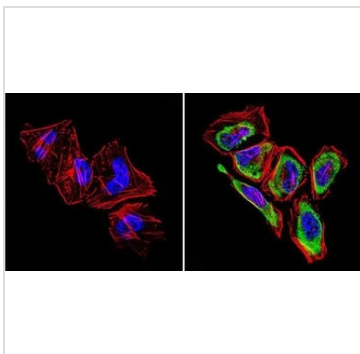
Blue : Nuclei

Red : Actin

Fixation : Formalin

Permeabilization : 0.1% Triton X-100 in TBS for 5-10 minute

Dilution : 1:20 overnight at 4°C


GTX22776 ICC/IF Image

ICC/IF analysis of HeLa cells using GTX22776 GRK1 antibody [D11]. Cells were probed without (left) or with(right) an antibody.

Green : Primary antibody

Blue : Nuclei

Red : Actin

Fixation : Formalin

Permeabilization : 0.1% Triton X-100 in TBS for 5-10 minute

Dilution : 1:200 and incubated overnight in a humidified chamber



For full product information, images and publications, please visit our [website](#).