

# PPAR alpha antibody [3B6/PPAR]

**Cat. No. GTX22779**

<b>Host</b>	Mouse
<b>Clonality</b>	Monoclonal
<b>Isotype</b>	IgG2b
<b>Application</b>	WB, ICC/IF, FACS, IP, ChIP assay, Gel supershift assays
<b>Reactivity</b>	Human, Mouse, Rat, Rabbit, Bovine

Reference ( 1 )  
Package  
100 µg

## APPLICATION

### Application Note

\*Optimal dilutions/concentrations should be determined by the researcher.

Suggested dilution	Recommended dilution
WB	2-5 µg/ml
ICC/IF	2µg/ml
FACS	1µg per 10 <sup>6</sup> cells
IP	Assay dependent
ChIP assay	Assay dependent
Gel supershift assays	Assay dependent

Not tested in other applications.

**Calculated MW** 52 kDa. ( [Note](#) )

## PROPERTIES

<b>Form</b>	Liquid
<b>Buffer</b>	PBS
<b>Preservative</b>	0.05% Sodium azide
<b>Storage</b>	Store as concentrated solution. Centrifuge briefly prior to opening vial. For short-term storage (1-2 weeks), store at 4°C. For long-term storage, aliquot and store at -20°C or below. Avoid multiple freeze-thaw cycles.
<b>Concentration</b>	1 mg/ml (Please refer to the vial label for the specific concentration.)
<b>Immunogen</b>	Purified recombinant PPAR alpha protein.
<b>Purification</b>	Purified IgG
<b>Conjugation</b>	Unconjugated

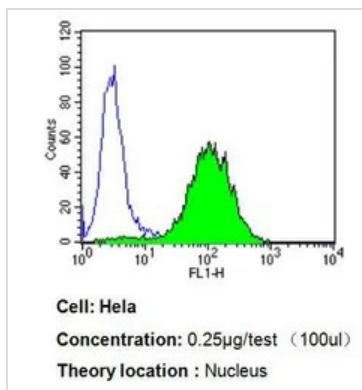


For full product information, images and publications, please visit our [website](#).

For laboratory research use only. Not for any clinical, therapeutic, or diagnostic use in humans or animals. Not for animal or human consumption.

**Note**

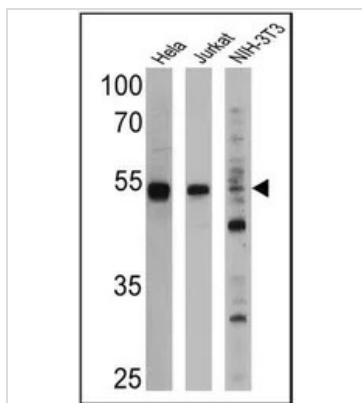
Purchasers shall not, and agree not to enable third parties to, analyze, copy, reverse engineer or otherwise attempt to determine the structure or sequence of the product.

**DATA IMAGES**

**GTX22779 FACS Image**

FACS analysis of HeLa cells using GTX12412 PPAR alpha antibody [3B6/PPAR] compared to an isotype control (blue).

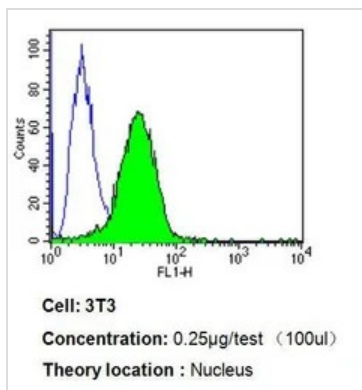
Dilution : 0.25 ug/test for 60 min at room temperature

Fixation : 2% paraformaldehyde


**GTX22779 WB Image**

WB analysis of 25 ug of HeLa (Lane 1), Jurkat (Lane 2), and NIH-3T3 cell lysates (Lane 3) using GTX22779 PPAR alpha antibody [3B6/PPAR].

Dilution : 1:1000 (HeLa and Jurkat) and 1:500 (NIH-3T3)


**GTX22779 FACS Image**

FACS analysis of 3T3 cells using GTX12412 PPAR alpha antibody [3B6/PPAR] compared to an isotype control (blue).

Dilution : 0.25 ug/test for 60 min at room temperature

Fixation : 2% paraformaldehyde



For full product information, images and publications, please visit our [website](https://www.genetex.com).