

PPAR alpha antibody [3B6/PPAR]

Cat. No. GTX22779

Host	Mouse
Clonality	Monoclonal
Isotype	IgG2b
Applications	WB, ICC/IF, FCM, IP, ChIP assay, Gel supershift assays
Reactivity	Human, Mouse, Rat, Rabbit, Bovine

References (4)

Package

100 µg

Applications

Application Note

*Optimal dilutions/concentrations should be determined by the researcher.

Suggested dilution	Recommended dilution
WB	2-5 µg/ml
ICC/IF	2µg/ml
FCM	1µg per 10 ⁶ cells
IP	Assay dependent
ChIP assay	Assay dependent
Gel supershift assays	Assay dependent

Not tested in other applications.

Calculated MW 52 kDa. ([Note](#))

Properties

Form	Liquid
Buffer	PBS
Preservative	0.05% Sodium azide
Storage	Store as concentrated solution. Centrifuge briefly prior to opening vial. For short-term storage (1-2 weeks), store at 4°C. For long-term storage, aliquot and store at -20°C or below. Avoid multiple freeze-thaw cycles.
Concentration	1 mg/ml (Please refer to the vial label for the specific concentration.)
Immunogen	Purified recombinant PPAR alpha protein.
Purification	Purified IgG
Conjugation	Unconjugated



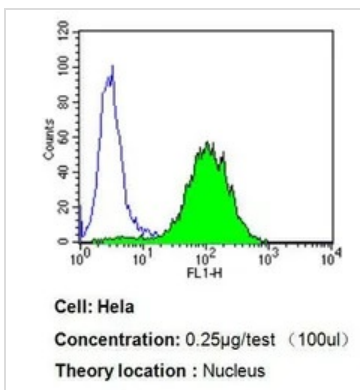
For full product information, images and publications, please visit our [website](#).

For laboratory research use only. Not for any clinical, therapeutic, or diagnostic use in humans or animals. Not for animal or human consumption.

Note

Purchasers shall not, and agree not to enable third parties to, analyze, copy, reverse engineer or otherwise attempt to determine the structure or sequence of the product.

DATA IMAGES

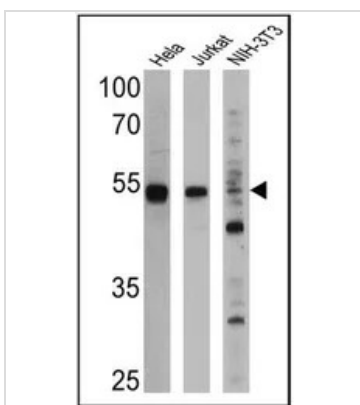


GTX22779 FCM Image

FACS analysis of HeLa cells using GTX12412 PPAR alpha antibody [3B6/PPAR] compared to an isotype control (blue).

Dilution : 0.25 ug/test for 60 min at room temperature

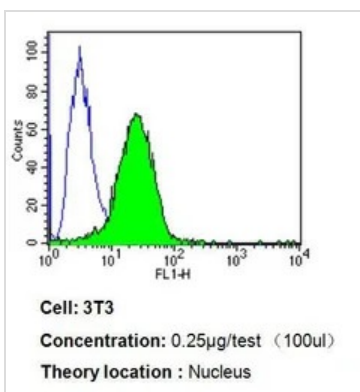
Fixation : 2% paraformaldehyde



GTX22779 WB Image

WB analysis of 25 ug of HeLa (Lane 1), Jurkat (Lane 2), and NIH-3T3 cell lysates (Lane 3) using GTX22779 PPAR alpha antibody [3B6/PPAR].

Dilution : 1:1000 (HeLa and Jurkat) and 1:500 (NIH-3T3)



GTX22779 FCM Image

FACS analysis of 3T3 cells using GTX12412 PPAR alpha antibody [3B6/PPAR] compared to an isotype control (blue).

Dilution : 0.25 ug/test for 60 min at room temperature

Fixation : 2% paraformaldehyde



For full product information, images and publications, please visit our [website](#).