

## SRC3 antibody [AX15.3]

Cat. No. GTX22782

Host	Mouse
Clonality	Monoclonal
Isotype	IgG1
Applications	WB, IHC-P, IP, ChIP assay
Reactivity	Human

**Package**  
100 µg

## Applications

## Application Note

\*Optimal dilutions/concentrations should be determined by the researcher.

Suggested dilution	Recommended dilution
WB	2µg/ml
IHC-P	1:10-1:100
IP	Assay dependent
ChIP assay	Assay dependent

Not tested in other applications.

**Calculated MW** 155 kDa. ([Note](#))

## Properties

Form	Liquid
Buffer	PBS, 0.1% BSA
Preservative	0.05% Sodium azide
Storage	Store as concentrated solution. Centrifuge briefly prior to opening vial. For short-term storage (1-2 weeks), store at 4°C. For long-term storage, aliquot and store at -20°C or below. Avoid multiple freeze-thaw cycles.
Concentration	1 mg/ml (Please refer to the vial label for the specific concentration.)
Immunogen	GST fusion protein encoding amino acid residues 605-1294 of human AIB1.
Purification	Purified IgG
Conjugation	Unconjugated

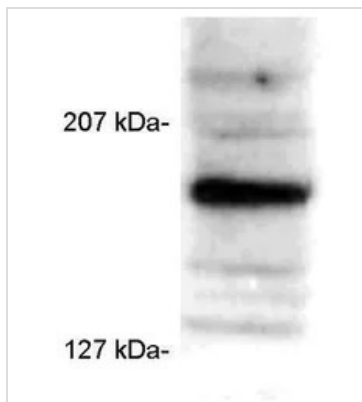
## Note

For laboratory research use only. Not for any clinical, therapeutic, or diagnostic use in humans or animals. Not for animal or human consumption.

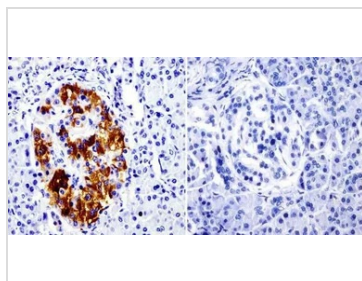
Purchasers shall not, and agree not to enable third parties to, analyze, copy, reverse engineer or otherwise attempt to determine the structure or sequence of the product.



For full product information, images and publications, please visit our [website](#).

**DATA IMAGES**

**GTX22782 WB Image**

WB analysis of MCF-7 cell extract using GTX22782 SRC3 antibody [AX15.3].


**GTX22782 IHC-P Image**

IHC-P analysis of human pancreas tissue using GTX22782 SRC3 antibody [AX15.3].

Left : Primary antibody

Right : Negative control without primary antibody

Antigen retrieval : heat induced antigen retrieval was performed using 10mM sodium citrate (pH6.0) buffer, microwaved for 8-15 minutes

Dilution : 1:20



For full product information, images and publications, please visit our [website](https://www.genetex.com).