

CFTR antibody [CF3]

Cat. No. GTX22784

Host	Mouse
Clonality	Monoclonal
Isotype	IgM
Applications	WB, ICC/IF, IHC-P, FCM, IP, IHC, Neutralizing/Inhibition
Reactivity	Human, Mouse

Package
100 µl

Applications

Application Note

*Optimal dilutions/concentrations should be determined by the researcher.

Suggested dilution	Recommended dilution
WB	1:500
ICC/IF	1:500
IHC-P	1:200
FCM	1:100
IP	Assay dependent
IHC	Assay dependent
Neutralizing/Inhibition	Assay dependent

Not tested in other applications.

Calculated MW 168 kDa. ([Note](#))**Product Note** This antibody detects one or more immunologically related proteins in mouse cell line Heb7a that does not contain CFTR mRNA.

Properties

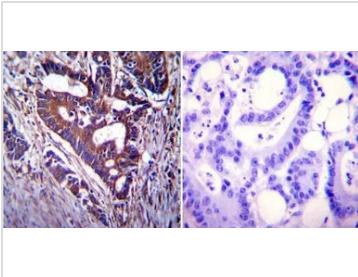
Form	Liquid
Buffer	Ascites
Preservative	0.05% Sodium azide
Storage	Store as concentrated solution. Centrifuge briefly prior to opening vial. For short-term storage (1-2 weeks), store at 4°C. For long-term storage, aliquot and store at -20°C or below. Avoid multiple freeze-thaw cycles.
Immunogen	Synthetic Peptide: G(103) R I I A S Y D P D N K E E R(117)
Purification	Unpurified
Conjugation	Unconjugated

For full product information, images and publications, please visit our [website](#).

For laboratory research use only. Not for any clinical, therapeutic, or diagnostic use in humans or animals. Not for animal or human consumption.

Note

Purchasers shall not, and agree not to enable third parties to, analyze, copy, reverse engineer or otherwise attempt to determine the structure or sequence of the product.

DATA IMAGES

GTX22784 IHC-P Image

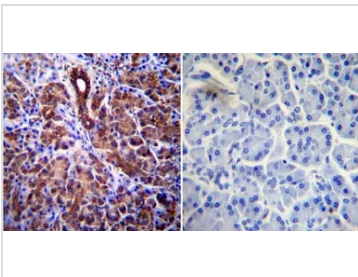
IHC-P analysis of human colon carcinoma tissue using GTX22784 CFTR antibody [CF3].

Left : Primary antibody

Right : Negative control without primary antibody

Antigen retrieval : heat induced antigen retrieval was performed using 10mM sodium citrate (pH6.0) buffer, microwaved for 8-15 minutes

Dilution : 1:200


GTX22784 IHC-P Image

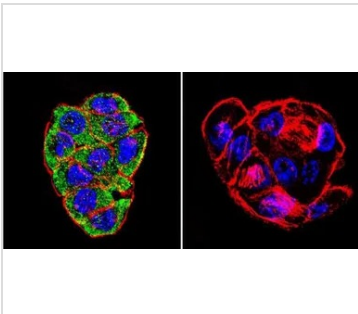
IHC-P analysis of human pancreas tissue using GTX22784 CFTR antibody [CF3].

Left : Primary antibody

Right : Negative control without primary antibody

Antigen retrieval : heat induced antigen retrieval was performed using 10mM sodium citrate (pH6.0) buffer, microwaved for 8-15 minutes

Dilution : 1:200


GTX22784 ICC/IF Image

ICC/IF analysis of WiDr cells using GTX22784 CFTR antibody [CF3]. Cells were probed without (right) or with (left) an antibody.

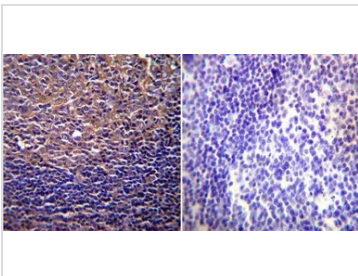
Green : Primary antibody

Blue : Nuclei

Red : Actin

Fixation : formaldehyde

Dilution : 1:200 overnight at 4°C


GTX22784 IHC-P Image

IHC-P analysis of human tonsil tissue using GTX22784 CFTR antibody [CF3].

Left : Primary antibody

Right : Negative control without primary antibody

Antigen retrieval : heat induced antigen retrieval was performed using 10mM sodium citrate (pH6.0) buffer, microwaved for 8-15 minutes

Dilution : 1:200



For full product information, images and publications, please visit our [website](https://www.genetex.com).