

Endothelin 1 antibody [TR.ET.48.5]

Cat. No. GTX22786

Host	Mouse
Clonality	Monoclonal
Isotype	IgG1
Applications	WB, ICC/IF, IHC-P, IHC-Fr, FCM, RIA
Reactivity	Human, Mouse, Rat, Sheep, Dog, Pig

References (1)

Package

100 µl

Applications

Application Note

*Optimal dilutions/concentrations should be determined by the researcher.

Suggested dilution	Recommended dilution
WB	1:100-1:1000
ICC/IF	1:200-1:1000
IHC-P	1:250
IHC-Fr	1:250
FCM	0.5 µg/test
RIA	1:25,000

Not tested in other applications.

Calculated MW 24 kDa. ([Note](#))

Product Note This antibody shows little cross-reactivity to related peptides and no known cross-reactivity to non-related peptides. Studies suggest that this antibody binds to an epitope in the region of ET-1 represented by amino acids 8-16.

Properties

Form	Liquid
Buffer	PBS
Preservative	0.05% Sodium azide
Storage	Store as concentrated solution. Centrifuge briefly prior to opening vial. For short-term storage (1-2 weeks), store at 4°C. For long-term storage, aliquot and store at -20°C or below. Avoid multiple freeze-thaw cycles.
Concentration	2.5 mg/ml (Please refer to the vial label for the specific concentration.)
Immunogen	Pure endothelin-1 conjugated to KLH.
Purification	Purified by affinity chromatography



For full product information, images and publications, please visit our [website](#).

Date 2025 / 12 / 28 Page 1 of 2

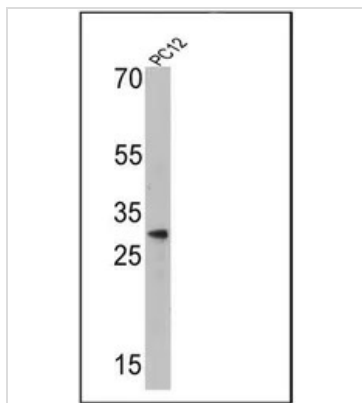
Conjugation

Unconjugated

Note

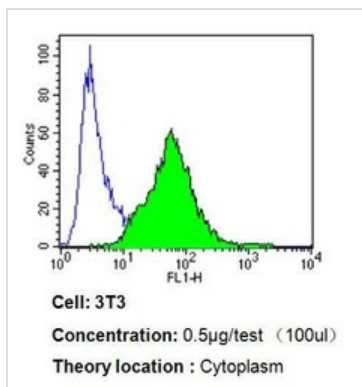
For laboratory research use only. Not for any clinical, therapeutic, or diagnostic use in humans or animals. Not for animal or human consumption.

Purchasers shall not, and agree not to enable third parties to, analyze, copy, reverse engineer or otherwise attempt to determine the structure or sequence of the product.

DATA IMAGES

GTx22786 WB Image

WB analysis of 25 ug of PC12 cell lysate using GTx22786 Endothelin 1 antibody [TR.ET.48.5].

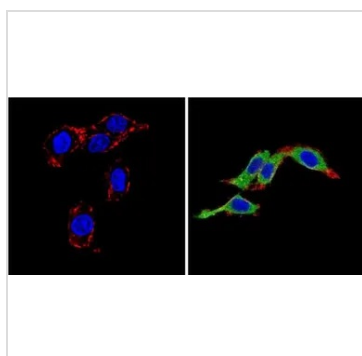
Dilution : 1:500


GTx22786 FCM Image

FACS analysis of 3T3 cells using GTx22786 Endothelin 1 antibody [TR.ET.48.5] compared to an isotype control (blue).

Dilution : 0.5 ug/test for 60 min at room temperature

Fixation : 2% paraformaldehyde


GTx22786 ICC/IF Image

ICC/IF analysis of PC12 cells using GTx22786 Endothelin 1 antibody [TR.ET.48.5]. Cells were probed without (left) or with(right) an antibody.

Green : Primary antibody

Blue : Nuclei

Red : Actin

Fixation : Formalin

Permeabilization : 0.1% Triton X-100 in TBS for 5-10 minute

Dilution : 1:200 incubated overnight at 4 °C



For full product information, images and publications, please visit our [website](https://www.genetex.com).