

PDI antibody [RL90]

Cat. No. GTX22792

Host	Mouse
Clonality	Monoclonal
Isotype	IgG2a
Applications	WB, ICC/IF, IHC-P, IHC-Fr, FCM, IP, IM, Neutralizing/Inhibition
Reactivity	Human, Mouse, Rat, Dog, Hamster, Pig, Rhesus Monkey, Primate

References (1)

Package

100 µl

Applications

Application Note

*Optimal dilutions/concentrations should be determined by the researcher.

Suggested dilution	Recommended dilution
WB	1:200-1:2000
ICC/IF	1:100
IHC-P	1:100
IHC-Fr	1:100
FCM	0.5-1 µg/test
IP	Assay dependent
IM	Assay dependent
Neutralizing/Inhibition	Assay dependent

Not tested in other applications.

Calculated MW 57 kDa. ([Note](#))

Properties

Form	Liquid
Buffer	Buffer, 0.1% BSA
Preservative	0.05% Sodium azide
Storage	Store as concentrated solution. Centrifuge briefly prior to opening vial. For short-term storage (1-2 weeks), store at 4°C. For long-term storage, aliquot and store at -20°C or below. Avoid multiple freeze-thaw cycles.
Concentration	1 mg/ml (Please refer to the vial label for the specific concentration.)
Immunogen	Purified rat PDI protein.
Purification	Protein A purified



For full product information, images and publications, please visit our [website](#).

Conjugation

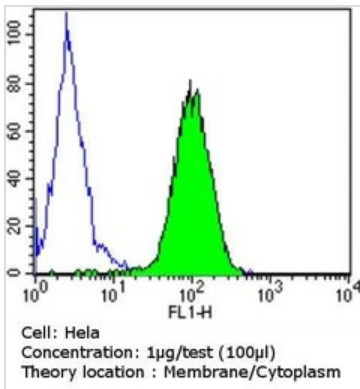
Unconjugated

For laboratory research use only. Not for any clinical, therapeutic, or diagnostic use in humans or animals. Not for animal or human consumption.

Note

Purchasers shall not, and agree not to enable third parties to, analyze, copy, reverse engineer or otherwise attempt to determine the structure or sequence of the product.

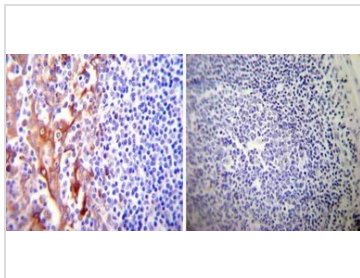
DATA IMAGES


GTX22792 FCM Image

FACS analysis of HeLa cells using GTX22792 PDI antibody [RL90] compared to an isotype control (blue).

Dilution : 1 ug/test for 60 min at room temperature

Fixation : 2% paraformaldehyde


GTX22792 IHC-P Image

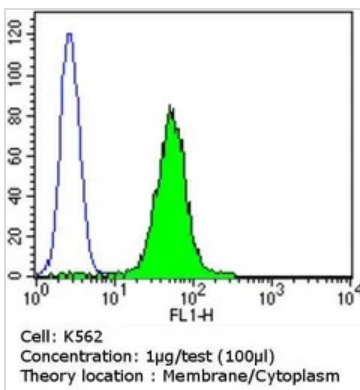
IHC-P analysis of human tonsil tissue using GTX22792 PDI antibody [RL90].

Left : Primary antibody

Right : Negative control without primary antibody

Antigen retrieval : heat induced antigen retrieval was performed using 10mM sodium citrate (pH6.0) buffer, microwaved for 8-15 minutes

Dilution : 1:200


GTX22792 FCM Image

FACS analysis of K562 cells using GTX22792 PDI antibody [RL90] compared to an isotype control (blue).

Dilution : 1 ug/test for 60 min at room temperature

Fixation : 2% paraformaldehyde



For full product information, images and publications, please visit our [website](https://www.genetex.com).