

NFAT2 antibody [7A6]

Cat. No. GTX22796

Host	Mouse
Clonality	Monoclonal
Isotype	IgG1
Applications	WB, ICC/IF, IHC-P, IP, ChIP assay, Gel supershift assays
Reactivity	Human, Mouse, Rat, Rabbit, Hamster, Primate

References (2)

Package

100 µl

Applications

Application Note

*Optimal dilutions/concentrations should be determined by the researcher.

Suggested dilution	Recommended dilution
WB	1:2,000
ICC/IF	1:10-1:250
IHC-P	Assay dependent
IP	Assay dependent
ChIP assay	Assay dependent
Gel supershift assays	Assay dependent

Not tested in other applications.

Calculated MW 101 kDa. ([Note](#))

Product Note This antibody does not cross react with NFATc2 (NFAT1).

Properties

Form	Liquid
Buffer	Ascites diluted with PBS
Preservative	0.05% Sodium azide
Storage	Store as concentrated solution. Centrifuge briefly prior to opening vial. For short-term storage (1-2 weeks), store at 4°C. For long-term storage, aliquot and store at -20°C or below. Avoid multiple freeze-thaw cycles.
Immunogen	Bacterially expressed glutathione S-transferase (GST) fusion protein containing NF-ATc1 residues 1-654.
Purification	Unpurified
Conjugation	Unconjugated

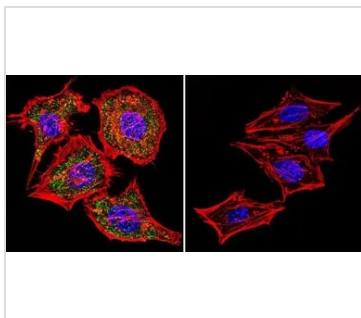


For full product information, images and publications, please visit our [website](#).

For laboratory research use only. Not for any clinical, therapeutic, or diagnostic use in humans or animals. Not for animal or human consumption.

Note

Purchasers shall not, and agree not to enable third parties to, analyze, copy, reverse engineer or otherwise attempt to determine the structure or sequence of the product.

DATA IMAGES

GTX22796 ICC/IF Image

ICC/IF analysis of HeLa cells using GTX22796 NFAT2 antibody [7A6]. Cells were probed without (right) or with(left) an antibody.

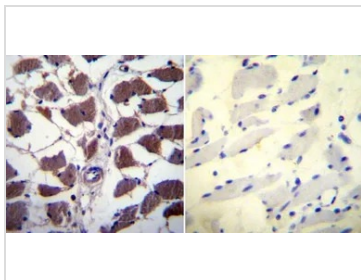
Green : Primary antibody

Blue : Nuclei

Red : Actin

Fixation : formaldehyde

Dilution : 1:20 overnight at 4°C


GTX22796 IHC-P Image

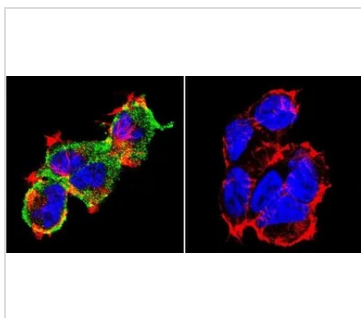
IHC-P analysis of human skeletal muscle tissue using GTX22796 NFAT2 antibody [7A6].

Left : Primary antibody

Right : Negative control without primary antibody

Antigen retrieval : heat induced antigen retrieval was performed using 10mM sodium citrate (pH6.0) buffer, microwaved for 8-15 minutes

Dilution : 1:20


GTX22796 ICC/IF Image

ICC/IF analysis of 293 cells using GTX22796 NFAT2 antibody [7A6]. Cells were probed without (right) or with(left) an antibody.

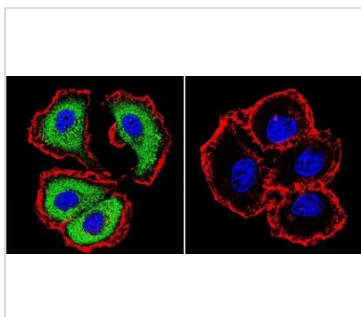
Green : Primary antibody

Blue : Nuclei

Red : Actin

Fixation : formaldehyde

Dilution : 1:20 overnight at 4°C


GTX22796 ICC/IF Image

ICC/IF analysis of MCF-7 cells using GTX22796 NFAT2 antibody [7A6]. Cells were probed without (right) or with(left) an antibody.

Green : Primary antibody

Blue : Nuclei

Red : Actin

Fixation : formaldehyde

Dilution : 1:20 overnight at 4°C



For full product information, images and publications, please visit our [website](https://www.genetex.com).