

## TCP1 alpha antibody [91A]

Cat. No. GTX22797

Host	Rat
Clonality	Monoclonal
Isotype	IgG2a
Applications	WB, ICC/IF, IHC-P, FCM, IP
Reactivity	Human, Mouse, Rat, Yeast, Dog, Hamster, Chicken, Primate

Package  
100 µl

## Applications

## Application Note

\*Optimal dilutions/concentrations should be determined by the researcher.

Suggested dilution	Recommended dilution
WB	1:1,000
ICC/IF	1:100
IHC-P	1:20
FCM	1:100
IP	Assay dependent

Not tested in other applications.

Calculated MW 60 kDa. ( [Note](#) )

Product Note The epitope for this antibody has been mapped to amino acids 465-469 representing the pentamer peptide AKLRA.

## Properties

Form	Liquid
Buffer	Ascites
Preservative	0.05% Sodium azide
Storage	Store as concentrated solution. Centrifuge briefly prior to opening vial. For short-term storage (1-2 weeks), store at 4°C. For long-term storage, aliquot and store at -20°C or below. Avoid multiple freeze-thaw cycles.
Immunogen	Bacterially expressed fragment of mouse TCP-1, residues 306-556.
Purification	Unpurified
Conjugation	Unconjugated

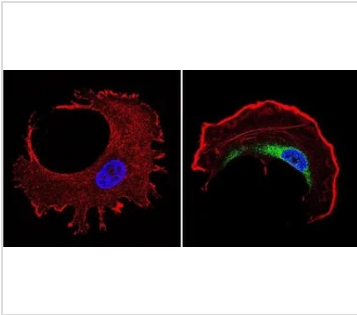
For full product information, images and publications, please visit our [website](#).

For laboratory research use only. Not for any clinical, therapeutic, or diagnostic use in humans or animals. Not for animal or human consumption.

## Note

Purchasers shall not, and agree not to enable third parties to, analyze, copy, reverse engineer or otherwise attempt to determine the structure or sequence of the product.

## DATA IMAGES



### GTX22797 ICC/IF Image

ICC/IF analysis of human cells using GTX22797 TCP1 alpha antibody [91A].

Green : Primary antibody

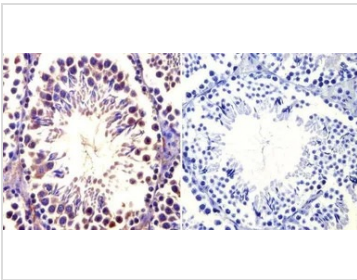
Blue : Nuclei

Red : Actin

Fixation : Formalin

Permeabilization : 0.1% Triton X-100 in TBS for 5-10 minute

Dilution : 1:100 incubated overnight in a humidified chamber



### GTX22797 IHC-P Image

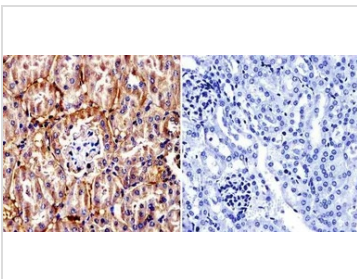
IHC-P analysis of mouse testis tissue using GTX22797 TCP1 alpha antibody [91A].

Left : Primary antibody

Right : Negative control without primary antibody

Antigen retrieval : heat induced antigen retrieval was performed using 10mM sodium citrate (pH6.0) buffer, microwaved for 8-15 minutes

Dilution : 1:20



### GTX22797 IHC-P Image

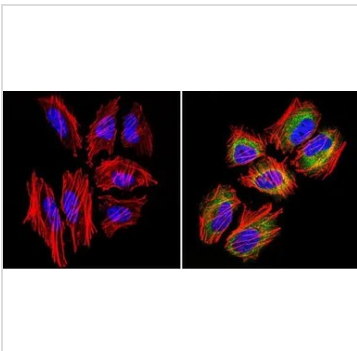
IHC-P analysis of mouse kidney tissue using GTX22797 TCP1 alpha antibody [91A].

Left : Primary antibody

Right : Negative control without primary antibody

Antigen retrieval : heat induced antigen retrieval was performed using 10mM sodium citrate (pH6.0) buffer, microwaved for 8-15 minutes

Dilution : 1:20



### GTX22797 ICC/IF Image

ICC/IF analysis of HeLa cells using GTX22797 TCP1 alpha antibody [91A]. Cells were probed without (left) or with(right) an antibody.

Green : Primary antibody

Blue : Nuclei

Red : Actin

Fixation : Formalin

Permeabilization : 0.1% Triton X-100 in TBS for 5-10 minute

Dilution : 1:100 incubated overnight in a humidified chamber



For full product information, images and publications, please visit our [website](https://www.genetex.com).