

AChE antibody [HR2]

Cat. No. GTX22803

Host	Mouse
Clonality	Monoclonal
Isotype	IgG2b
Application	WB, ICC/IF, IHC-P, IHC-Fr, IP, ELISA, IHC
Reactivity	Human, Mouse, Rabbit, Bovine, Cat, Guinea pig

Reference (2)
Package
200 µl

APPLICATION

Application Note

*Optimal dilutions/concentrations should be determined by the researcher.

Suggested dilution	Recommended dilution
WB	Assay dependent
ICC/IF	1:100-1:1000
IHC-P	Assay dependent
IHC-Fr	1:50
IP	Assay dependent
ELISA	Assay dependent
IHC	Assay dependent

Not tested in other applications.

Calculated MW 68 kDa. ([Note](#))

Product Note

This antibody does not cross react with rat or frog AChE, and does not detect butyrylcholinesterase (BChE). Immunohistochemical staining of AChE in human brain samples with GTX22803 results in staining of nerve fibers and terminals.

PROPERTIES

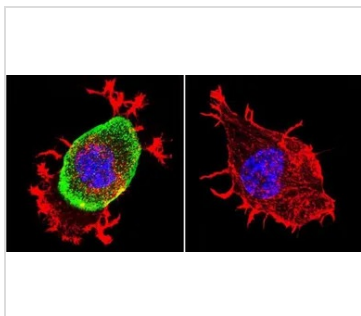
Form	Liquid
Buffer	PBS
Preservative	0.05% Sodium azide
Storage	Store as concentrated solution. Centrifuge briefly prior to opening vial. For short-term storage (1-2 weeks), store at 4°C. For long-term storage, aliquot and store at -20°C or below. Avoid multiple freeze-thaw cycles.
Concentration	1 mg/ml (Please refer to the vial label for the specific concentration.)
Immunogen	Purified human cerebellar acetylcholinesterase.



For full product information, images and publications, please visit our [website](#).

Purification	Protein A purified
Conjugation	Unconjugated
Note	<p>For laboratory research use only. Not for any clinical, therapeutic, or diagnostic use in humans or animals. Not for animal or human consumption.</p> <p>Purchasers shall not, and agree not to enable third parties to, analyze, copy, reverse engineer or otherwise attempt to determine the structure or sequence of the product.</p>

DATA IMAGES



GTX22803 ICC/IF Image

ICC/IF analysis of Neuro-2a Cells using GTX22803 AChE antibody [HR2]. Cells were probed without (right) or with (left) an antibody.

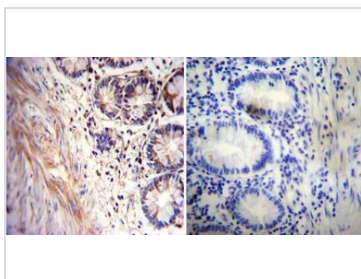
Green : Primary antibody

Blue : Nuclei

Red : Actin

Fixation : formaldehyde

Dilution : 1:200 overnight at 4°C



GTX22803 IHC-P Image

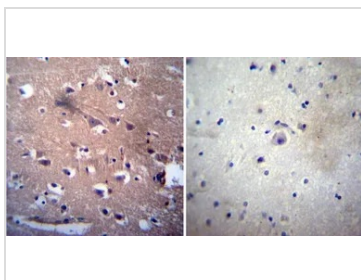
IHC-P analysis of human rectum tissue using GTX22803 AChE antibody [HR2].

Left : Primary antibody

Right : Negative control without primary antibody

Antigen retrieval : heat induced antigen retrieval was performed using 10mM sodium citrate (pH6.0) buffer, microwaved for 8-15 minutes

Dilution : 1:20



GTX22803 IHC-P Image

IHC-P analysis of human Brain tissue using GTX22803 AChE antibody [HR2].

Left : Primary antibody

Right : Negative control without primary antibody

Antigen retrieval : heat induced antigen retrieval was performed using 10mM sodium citrate (pH6.0) buffer, microwaved for 8-15 minutes

Dilution : 1:200



For full product information, images and publications, please visit our [website](https://www.genetex.com).