

## AChR antibody [88B]

**Cat. No. GTX22804**

<b>Host</b>	Mouse
<b>Clonality</b>	Monoclonal
<b>Isotype</b>	IgG1
<b>Applications</b>	WB, ICC/IF, IHC-P, IHC-Fr, IP, ELISA
<b>Reactivity</b>	Human, Mouse, Rat, Rabbit, Chicken, Amphibians, Fish

References ( 1 )

Package

100 µl

## Applications

**Application Note**

\*Optimal dilutions/concentrations should be determined by the researcher.

Suggested dilution	Recommended dilution
WB	1:5,000
ICC/IF	1:20-100
IHC-P	Assay dependent
IHC-Fr	1:1,000
IP	Assay dependent
ELISA	Assay dependent

Not tested in other applications.

**Product Note**

This antibody detects nicotinic acetylcholine receptor (nAChR) gamma and delta subunits. This antibody does not detect the alpha 1 and beta 1 subunits.

## Properties

<b>Form</b>	Liquid
<b>Buffer</b>	Ascites
<b>Preservative</b>	0.05% Sodium azide
<b>Storage</b>	Store as concentrated solution. Centrifuge briefly prior to opening vial. For short-term storage (1-2 weeks), store at 4°C. For long-term storage, aliquot and store at -20°C or below. Avoid multiple freeze-thaw cycles.
<b>Immunogen</b>	Purified Torpedo californica acetylcholine receptor.
<b>Purification</b>	Unpurified
<b>Conjugation</b>	Unconjugated

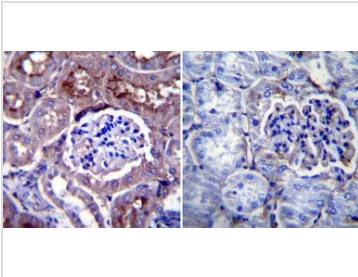


For full product information, images and publications, please visit our [website](#).

For laboratory research use only. Not for any clinical, therapeutic, or diagnostic use in humans or animals. Not for animal or human consumption.

**Note**  
 Purchasers shall not, and agree not to enable third parties to, analyze, copy, reverse engineer or otherwise attempt to determine the structure or sequence of the product.

DATA IMAGES



**GTX22804 IHC-P Image**

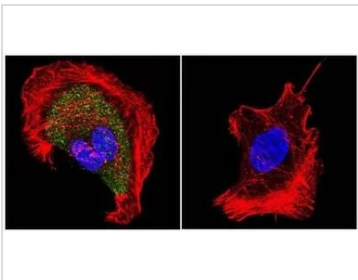
IHC-P analysis of mouse kidney tissue using GTX22804 AChR antibody [88B].

Left : Primary antibody

Right : Negative control without primary antibody

Antigen retrieval : heat induced antigen retrieval was performed using 10mM sodium citrate (pH6.0) buffer, microwaved for 8-15 minutes

Dilution : 1:20



**GTX22804 ICC/IF Image**

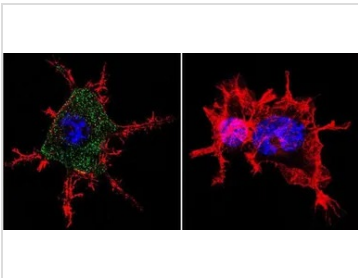
ICC/IF analysis of formaldehyde fixed U251 cells using GTX22804 AChR antibody [88B]. Cells were probed without (right) or with (left) an antibody.

Green : Primary antibody

Blue : Nuclei

Red : Actin

Dilution : 1:100 overnight at 4 oC



**GTX22804 ICC/IF Image**

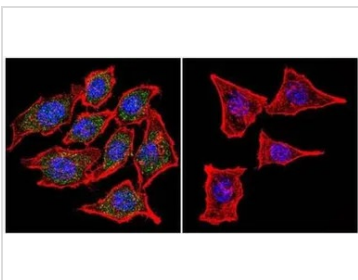
ICC/IF analysis of formaldehyde fixed Neuro-2a cells using GTX22804 AChR antibody [88B]. Cells were probed without (right) or with (left) an antibody.

Green : Primary antibody

Blue : Nuclei

Red : Actin

Dilution : 1:100 overnight at 4 oC



**GTX22804 ICC/IF Image**

ICC/IF analysis of formaldehyde fixed HeLa cells using GTX22804 AChR antibody [88B]. Cells were probed without (right) or with (left) an antibody.

Green : Primary antibody

Blue : Nuclei

Red : Actin

Dilution : 1:100 overnight at 4 oC



For full product information, images and publications, please visit our [website](#).