

AChR antibody [88B]

Cat. No. GTX22804

Host	Mouse
Clonality	Monoclonal
Isotype	IgG1
Applications	WB, ICC/IF, IHC-P, IHC-Fr, IP, ELISA
Reactivity	Human, Mouse, Rat, Rabbit, Chicken, Amphibians, Fish

Package
100 µl

Applications

Application Note

*Optimal dilutions/concentrations should be determined by the researcher.

Suggested dilution	Recommended dilution
WB	1:5,000
ICC/IF	1:20-100
IHC-P	Assay dependent
IHC-Fr	1:1,000
IP	Assay dependent
ELISA	Assay dependent

Not tested in other applications.

Product Note

This antibody detects nicotinic acetylcholine receptor (nAChR) gamma and delta subunits. This antibody does not detect the alpha 1 and beta 1 subunits.

Properties

Form	Liquid
Buffer	Ascites
Preservative	0.05% Sodium azide
Storage	Store as concentrated solution. Centrifuge briefly prior to opening vial. For short-term storage (1-2 weeks), store at 4°C. For long-term storage, aliquot and store at -20°C or below. Avoid multiple freeze-thaw cycles.
Immunogen	Purified Torpedo californica acetylcholine receptor.
Purification	Unpurified
Conjugation	Unconjugated



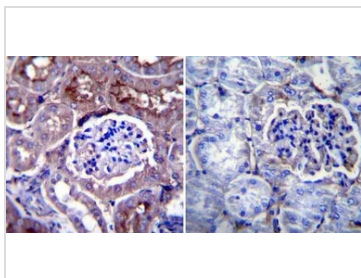
For full product information, images and publications, please visit our [website](#).

Date 2025 / 05 / 30 Page 1 of 2

For laboratory research use only. Not for any clinical, therapeutic, or diagnostic use in humans or animals. Not for animal or human consumption.

Note

Purchasers shall not, and agree not to enable third parties to, analyze, copy, reverse engineer or otherwise attempt to determine the structure or sequence of the product.

DATA IMAGES

GTx22804 IHC-P Image

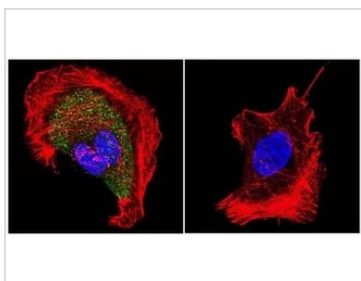
IHC-P analysis of mouse kidney tissue using GTx22804 AChR antibody [88B].

Left : Primary antibody

Right : Negative control without primary antibody

Antigen retrieval : heat induced antigen retrieval was performed using 10mM sodium citrate (pH6.0) buffer, microwaved for 8-15 minutes

Dilution : 1:20


GTx22804 ICC/IF Image

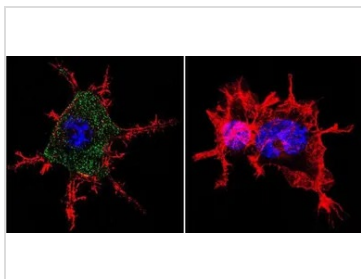
ICC/IF analysis of formaldehyde fixed U251 cells using GTx22804 AChR antibody [88B]. Cells were probed without (right) or with (left) an antibody.

Green : Primary antibody

Blue : Nuclei

Red : Actin

Dilution : 1:100 overnight at 4 oC


GTx22804 ICC/IF Image

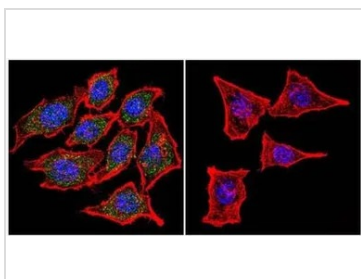
ICC/IF analysis of formaldehyde fixed Neuro-2a cells using GTx22804 AChR antibody [88B]. Cells were probed without (right) or with (left) an antibody.

Green : Primary antibody

Blue : Nuclei

Red : Actin

Dilution : 1:100 overnight at 4 oC


GTx22804 ICC/IF Image

ICC/IF analysis of formaldehyde fixed HeLa cells using GTx22804 AChR antibody [88B]. Cells were probed without (right) or with (left) an antibody.

Green : Primary antibody

Blue : Nuclei

Red : Actin

Dilution : 1:100 overnight at 4 oC



For full product information, images and publications, please visit our [website](http://www.genetex.com).