

## mAChR M2 antibody [31-1D1]

**Cat. No. GTX22805**

<b>Host</b>	Mouse
<b>Clonality</b>	Monoclonal
<b>Isotype</b>	IgG1
<b>Applications</b>	WB, ICC/IF, IHC-P, FCM, IP
<b>Reactivity</b>	Human, Mouse, Rat, Pig

References ( 2 )

Package

100 µl

## Applications

**Application Note**

\*Optimal dilutions/concentrations should be determined by the researcher.

Suggested dilution	Recommended dilution
WB	1:1,000
ICC/IF	2µg/ml
IHC-P	1:20
FCM	Assay dependent
IP	Assay dependent

Not tested in other applications.

**Calculated MW** 52 kDa. ( [Note](#) )**Product Note** This antibody is specific for the m2 mAChR subtype.

## Properties

<b>Form</b>	Liquid
<b>Buffer</b>	Buffer, 0.1% BSA
<b>Preservative</b>	0.05% Sodium azide
<b>Storage</b>	Store as concentrated solution. Centrifuge briefly prior to opening vial. For short-term storage (1-2 weeks), store at 4°C. For long-term storage, aliquot and store at -20°C or below. Avoid multiple freeze-thaw cycles.
<b>Concentration</b>	2 mg/ml (Please refer to the vial label for the specific concentration.)
<b>Immunogen</b>	Purified porcine cardiac m2 muscarinic acetylcholine receptor.
<b>Purification</b>	Protein A purified
<b>Conjugation</b>	Unconjugated



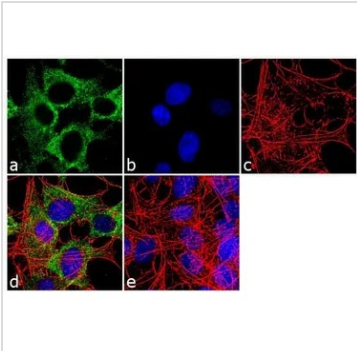
For full product information, images and publications, please visit our [website](#).

For laboratory research use only. Not for any clinical, therapeutic, or diagnostic use in humans or animals. Not for animal or human consumption.

**Note**

Purchasers shall not, and agree not to enable third parties to, analyze, copy, reverse engineer or otherwise attempt to determine the structure or sequence of the product.

## DATA IMAGES

**GTX22805 ICC/IF Image**

ICC/IF analysis of SH-SY5Y cells using GTX22805 mAChR M2 antibody [31-1D1]. Panel e is a no primary antibody control.

Green : Primary antibody

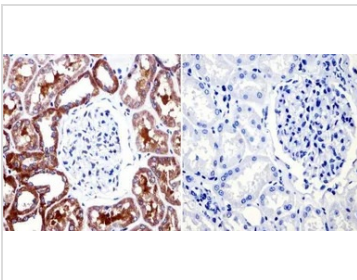
Blue : Nuclei

Red : Actin

Fixation : 4% paraformaldehyde

Permeabilization : 0.1% Triton X-100 for 10 minute

Dilution : 2 µg/ml in 0.1% BSA and incubated for 3 hours at room temperature

**GTX22805 IHC-P Image**

IHC-P analysis of human kidney tissue using GTX22805 mAChR M2 antibody [31-1D1].

Left : Primary antibody

Right : Negative control without primary antibody

Antigen retrieval : heat induced antigen retrieval was performed using 10mM sodium citrate (pH6.0) buffer, microwaved for 8-15 minutes

Dilution : 1:20



For full product information, images and publications, please visit our [website](#).