

alpha Adaptin antibody [AC1-M11]

Cat. No. GTX22807

Host	Mouse
Clonality	Monoclonal
Isotype	IgG2a
Application	WB, ICC/IF, IHC-P, IP, IHC
Reactivity	Human, Mouse, Rat, Bovine, Chicken, Pig, Amphibians, Primate

Reference (2)

Package

500 µl

APPLICATION

Application Note

*Optimal dilutions/concentrations should be determined by the researcher.

Suggested dilution	Recommended dilution
WB	2 µg/mL
ICC/IF	2 µg/mL
IHC-P	1:20
IP	Assay dependent
IHC	Assay dependent

Not tested in other applications.

Product Note

This antibody detects the products of both alpha-adaptin genes, alphaA and alphaC, as well as an alternatively spliced isoform of alphaA found in neurons.

PROPERTIES

Form	Liquid
Buffer	PBS
Preservative	0.05% Sodium azide
Storage	Store as concentrated solution. Centrifuge briefly prior to opening vial. For short-term storage (1-2 weeks), store at 4°C. For long-term storage, aliquot and store at -20°C or below. Avoid multiple freeze-thaw cycles.
Concentration	2 mg/ml (Please refer to the vial label for the specific concentration.)
Immunogen	Purified bovine brain adaptor complexes.
Purification	Protein A purified
Conjugation	Unconjugated

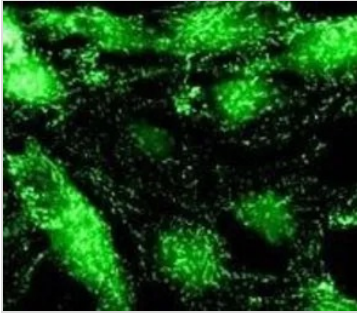


For full product information, images and publications, please visit our [website](#).

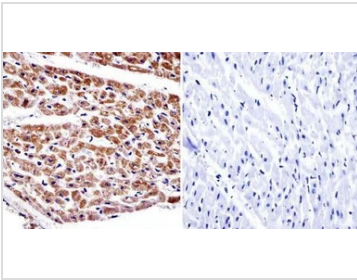
For laboratory research use only. Not for any clinical, therapeutic, or diagnostic use in humans or animals. Not for animal or human consumption.

Note

Purchasers shall not, and agree not to enable third parties to, analyze, copy, reverse engineer or otherwise attempt to determine the structure or sequence of the product.

DATA IMAGES

GTx22807 ICC/IF Image

ICC/IF analysis of NRK cells using GTx22807 alpha Adaptin antibody [AC1-M11].


GTx22807 IHC-P Image

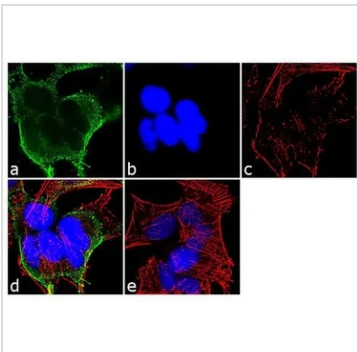
IHC-P analysis of human heart tissue using GTx22807 alpha Adaptin antibody [AC1-M11].

Left : Primary antibody

Right : Negative control without primary antibody

Antigen retrieval : heat induced antigen retrieval was performed using 10mM sodium citrate (pH6.0) buffer, microwaved for 8-15 minutes

Dilution : 1:20


GTx22807 ICC/IF Image

ICC/IF analysis of SH-SY5Y cells using GTx22807 alpha Adaptin antibody [AC1-M11]. Panel e is a no primary antibody control.

Green : Primary antibody

Blue : Nuclei

Red : Actin

Fixation : 4% paraformaldehyde

Permeabilization : 0.1% Triton X-100 for 10 minute

Dilution : 2 µg/ml in 0.1% BSA and incubated for 3 hours at room temperature



For full product information, images and publications, please visit our [website](https://www.genetex.com).