

## Spectrin beta 1 antibody [4C3]

Cat. No. GTX22808

Host	Mouse
Clonality	Monoclonal
Isotype	IgG1
Applications	WB, ICC/IF, IHC-P, FCM, IHC
Reactivity	Human, Mouse, Rat

Package  
100 µl

## Applications

## Application Note

\*Optimal dilutions/concentrations should be determined by the researcher.

Suggested dilution	Recommended dilution
WB	1:100
ICC/IF	1:10-1:200
IHC-P	1:20-1:200
FCM	0.5-2 µg/test
IHC	Assay dependent

**Note : If paraformaldehyde is used as a fixative, exposure should be limited to 5 minutes or less of no more than a 2% solution. If paraformaldehyde is used as a fixative, exposure should be limited to 5 minutes or less of no more than a 2% solution.**

Not tested in other applications.

Calculated MW	246 kDa. ( <a href="#">Note</a> )
Product Note	This antibody has been shown to specifically detect the two known alternatively spliced forms of spectrin, beta-1 epsilon-1, present in erythrocytes, and beta-1 epsilon-2, present in nerve and striated muscle cells. It does not cross-react with alpha-2 spectrin or either of the fodrin subunits.

## Properties

Form	Liquid
Buffer	Ascites diluted with PBS
Preservative	0.05% Sodium azide
Storage	Store as concentrated solution. Centrifuge briefly prior to opening vial. For short-term storage (1-2 weeks), store at 4°C. For long-term storage, aliquot and store at -20°C or below. Avoid multiple freeze-thaw cycles.
Immunogen	Purified human erythrocyte beta-1 spectrin.
Purification	Unpurified



For full product information, images and publications, please visit our [website](#).

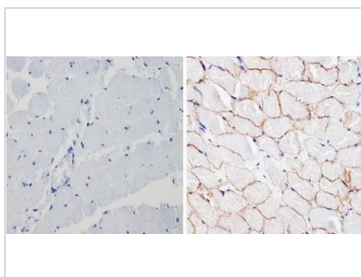
**Conjugation**

Unconjugated

**Note**

For laboratory research use only. Not for any clinical, therapeutic, or diagnostic use in humans or animals. Not for animal or human consumption.

Purchasers shall not, and agree not to enable third parties to, analyze, copy, reverse engineer or otherwise attempt to determine the structure or sequence of the product.

**DATA IMAGES**

**GTx22808 IHC-P Image**

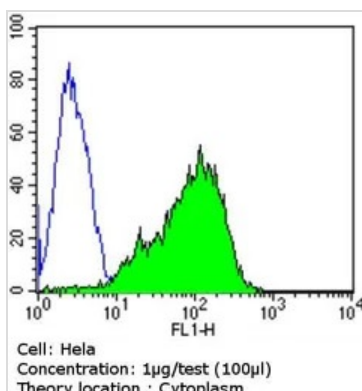
IHC-P analysis of human skeletal muscle using GTx22808 Spectrin beta 1 antibody [4C3].

Right : Primary antibody

Left : Negative control without primary antibody

Antigen retrieval : 10mM sodium citrate (pH 6.0) microwaved for 8-15 min

Dilution : 1:200

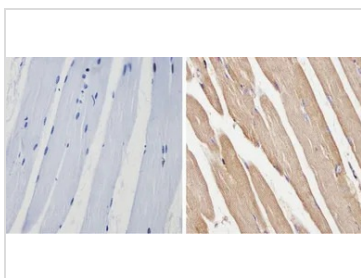

**GTx22808 FCM Image**

FACS analysis of HeLa cells using GTx22808 Spectrin beta 1 antibody [4C3] compared to an isotype control (blue).

Dilution : 1 ug/test for 60 min at room temperature

Fixation : 2% paraformaldehyde

Permeabilization : 90% methanol and incubated for 10 minutes at room temperature


**GTx22808 IHC-P Image**

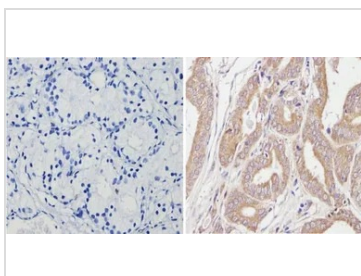
IHC-P analysis of mouse skeletal muscle using GTx22808 Spectrin beta 1 antibody [4C3].

Right : Primary antibody

Left : Negative control without primary antibody

Antigen retrieval : 10mM sodium citrate (pH 6.0) microwaved for 8-15 min

Dilution : 1:20


**GTx22808 IHC-P Image**

IHC-P analysis of human prostate carcinoma tissue using GTx22808 Spectrin beta 1 antibody [4C3].

Right : Primary antibody

Left : Negative control without primary antibody

Antigen retrieval : 10mM sodium citrate (pH 6.0) microwaved for 8-15 min

Dilution : 1:20


 For full product information, images and publications, please visit our [website](https://www.genetex.com).