

## Rab9 antibody [Mab9]

**Cat. No. GTX22810**

<b>Host</b>	Mouse
<b>Clonality</b>	Monoclonal
<b>Isotype</b>	IgG1
<b>Applications</b>	WB, ICC/IF, IHC-P, FCM, IP, IHC, IM
<b>Reactivity</b>	Human, Rat, Bovine, Dog, Hamster, Monkey, Primate

References ( 1 )

Package

100 µl

## Applications

**Application Note**

\*Optimal dilutions/concentrations should be determined by the researcher.

Suggested dilution	Recommended dilution
WB	1:1000-1:5000
ICC/IF	1:500
IHC-P	1:20
FCM	Assay dependent
IP	Assay dependent
IHC	Assay dependent
IM	Assay dependent

Not tested in other applications.

**Calculated MW** 23 kDa. ( [Note](#) )**Product Note** This antibody recognizes prenylated and non-prenylated rab 9. It does not cross-react with other rab family members.

## Properties

<b>Form</b>	Liquid
<b>Buffer</b>	PBS, 0.1% BSA
<b>Preservative</b>	0.05% Sodium azide
<b>Storage</b>	Store as concentrated solution. Centrifuge briefly prior to opening vial. For short-term storage (1-2 weeks), store at 4°C. For long-term storage, aliquot and store at -20°C or below. Avoid multiple freeze-thaw cycles.
<b>Concentration</b>	1 mg/ml (Please refer to the vial label for the specific concentration.)
<b>Immunogen</b>	Recombinant canine rab 9a.
<b>Purification</b>	Protein A purified



For full product information, images and publications, please visit our [website](#).

**Conjugation**

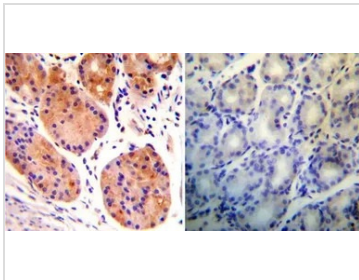
Unconjugated

**Note**

For laboratory research use only. Not for any clinical, therapeutic, or diagnostic use in humans or animals. Not for animal or human consumption.

Purchasers shall not, and agree not to enable third parties to, analyze, copy, reverse engineer or otherwise attempt to determine the structure or sequence of the product.

## DATA IMAGES

**GTX22810 IHC-P Image**

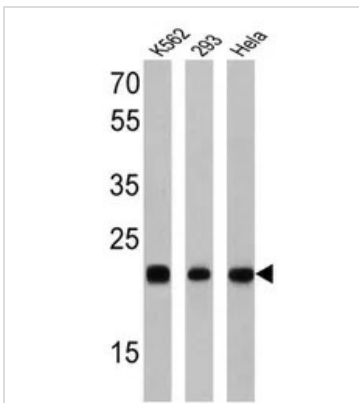
IHC-P analysis of human stomach tissue using GTX22810 Rab9 antibody [Mab9].

Left : Primary antibody

Right : Negative control without primary antibody

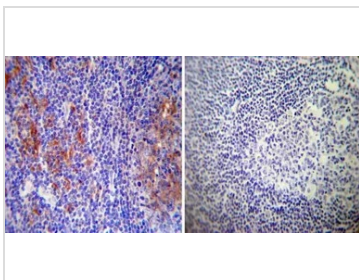
Antigen retrieval : heat induced antigen retrieval was performed using 10mM sodium citrate (pH6.0) buffer, microwaved for 8-15 minutes

Dilution : 1:20

**GTX22810 WB Image**

WB analysis of 25 ug of K562 (lane 1), 293 (lane 2) and HeLa (lane 3) using GTX22810 Rab9 antibody [Mab9].

Dilution : 1:2000

**GTX22810 IHC-P Image**

IHC-P analysis of human tonsil tissue using GTX22810 Rab9 antibody [Mab9].

Left : Primary antibody

Right : Negative control without primary antibody

Antigen retrieval : heat induced antigen retrieval was performed using 10mM sodium citrate (pH6.0) buffer, microwaved for 8-15 minutes

Dilution : 1:100



For full product information, images and publications, please visit our [website](#).