

Importin beta 1 antibody [3E9]

Cat. No. GTX22811

Host	Mouse
Clonality	Monoclonal
Isotype	IgG2a
Applications	WB, ICC/IF, FCM, IP, ChIP assay, IHC, Neutralizing/Inhibition
Reactivity	Human, Mouse, Rat, Bovine, Dog, Pig

References (5)

Package

100 µg

Applications

Application Note

*Optimal dilutions/concentrations should be determined by the researcher.

Suggested dilution	Recommended dilution
WB	1:5,000
ICC/IF	1:1000
FCM	1 µg/test
IP	Assay dependent
ChIP assay	Assay dependent
IHC	Assay dependent
Neutralizing/Inhibition	Assay dependent

Not tested in other applications.

Calculated MW 97 kDa. ([Note](#))

Product Note

This antibody does not detect bacterially expressed recombinant NTF97. Immunofluorescence staining of NTF97 in MDBK cells with GTX22811 results in the labeling of both the nuclear envelope (NE) and the cytoplasm and shows discontinuous, punctate staining along the rim of the NE.

Properties

Form	Liquid
Buffer	PBS
Preservative	0.05% Sodium azide
Storage	Store as concentrated solution. Centrifuge briefly prior to opening vial. For short-term storage (1-2 weeks), store at 4°C. For long-term storage, aliquot and store at -20°C or below. Avoid multiple freeze-thaw cycles.
Concentration	1 mg/ml (Please refer to the vial label for the specific concentration.)
Immunogen	Purified NTF97 from bovine erythrocytes.



For full product information, images and publications, please visit our [website](#).

Purification Protein A purified

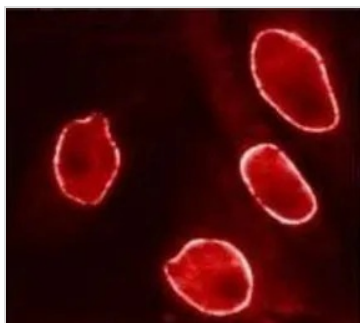
Conjugation Unconjugated

Note

For laboratory research use only. Not for any clinical, therapeutic, or diagnostic use in humans or animals. Not for animal or human consumption.

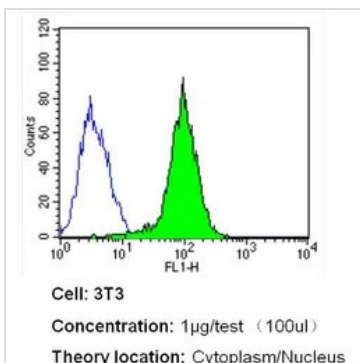
Purchasers shall not, and agree not to enable third parties to, analyze, copy, reverse engineer or otherwise attempt to determine the structure or sequence of the product.

DATA IMAGES



GTX22811 ICC/IF Image

ICC/IF analysis of PTK cells using GTX22811 Importin beta 1 antibody [3E9].

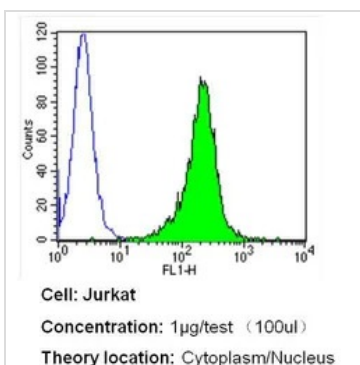


GTX22811 FCM Image

FACS analysis of NIH-3T3 cells using GTX22811 Importin beta 1 antibody [3E9] compared to an isotype control (blue).

Dilution : 1 ug/test for 40 min at room temperature

Fixation : 2% paraformaldehyde



GTX22811 FCM Image

FACS analysis of Jurkat cells using GTX22811 Importin beta 1 antibody [3E9] compared to an isotype control (blue).

Dilution : 1 ug/test for 40 min at room temperature

Fixation : 2% paraformaldehyde



For full product information, images and publications, please visit our [website](http://www.genetex.com).