

## p23 antibody [JJ3]

**Cat. No. GTX22814**

<b>Host</b>	Mouse
<b>Clonality</b>	Monoclonal
<b>Isotype</b>	IgG1
<b>Application</b>	WB, ICC/IF, IHC-P, FACS, IP, IHC
<b>Reactivity</b>	Human, Mouse, Rat, Rabbit, Chicken, Guinea pig

**Package**  
100 µl

### APPLICATION

#### Application Note

\*Optimal dilutions/concentrations should be determined by the researcher.

Suggested dilution	Recommended dilution
WB	1:1,000
ICC/IF	1:200-1:2000
IHC-P	Assay dependent
FACS	1:100
IP	Assay dependent
IHC	Assay dependent

Not tested in other applications.

**Calculated MW** 19 kDa. ( [Note](#) )

### PROPERTIES

<b>Form</b>	Liquid
<b>Buffer</b>	Ascites
<b>Preservative</b>	0.05% Sodium azide
<b>Storage</b>	Store as concentrated solution. Centrifuge briefly prior to opening vial. For short-term storage (1-2 weeks), store at 4°C. For long-term storage, aliquot and store at -20°C or below. Avoid multiple freeze-thaw cycles.
<b>Immunogen</b>	Recombinant human p23 protein.
<b>Purification</b>	Unpurified
<b>Conjugation</b>	Unconjugated

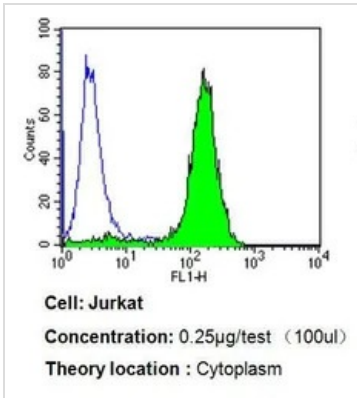


For full product information, images and publications, please visit our [website](#).

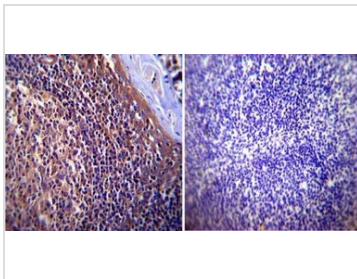
For laboratory research use only. Not for any clinical, therapeutic, or diagnostic use in humans or animals. Not for animal or human consumption.

**Note**

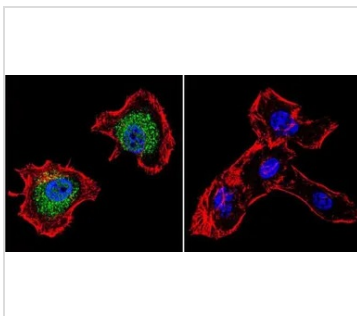
Purchasers shall not, and agree not to enable third parties to, analyze, copy, reverse engineer or otherwise attempt to determine the structure or sequence of the product.

**DATA IMAGES**

**GTx22814 FACS Image**

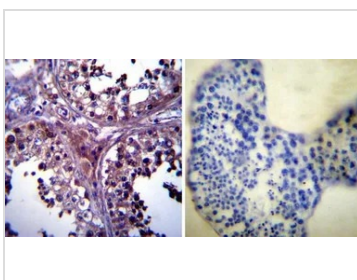
FACS analysis of Jurkat cells using GTx22814 p23 antibody [JJ3] compared to an isotype control (blue).  
Dilution : 0.25 ug/test for 60 min at room temperature  
Fixation : 2% paraformaldehyde


**GTx22814 IHC-P Image**

IHC-P analysis of human tonsil tissue using GTx22814 p23 antibody [JJ3].  
Left : Primary antibody  
Right : Negative control without primary antibody  
Antigen retrieval : heat induced antigen retrieval was performed using 10mM sodium citrate (pH6.0) buffer, microwaved for 8-15 minutes  
Dilution : 1:1000


**GTx22814 ICC/IF Image**

ICC/IF analysis of HeLa cells using GTx22814 p23 antibody [JJ3]. Cells were probed without (right) or with (left) an antibody.  
Green : Primary antibody  
Blue : Nuclei  
Red : Actin  
Fixation : formaldehyde  
Dilution : 1:500 overnight at 4°C


**GTx22814 IHC-P Image**

IHC-P analysis of human testis tissue using GTx22814 p23 antibody [JJ3].  
Left : Primary antibody  
Right : Negative control without primary antibody  
Antigen retrieval : heat induced antigen retrieval was performed using 10mM sodium citrate (pH6.0) buffer, microwaved for 8-15 minutes  
Dilution : 1:1000



For full product information, images and publications, please visit our [website](https://www.genetex.com).