

## CRABP1 antibody [C-1]

Cat. No. GTX22816

Host	Mouse
Clonality	Monoclonal
Isotype	IgG2b
Applications	WB, ICC/IF, IHC-P, IHC-Fr, FCM, ELISA
Reactivity	Human, Mouse, Rat, Rabbit, Bovine, Cat, Chicken, Primate, Avian

References ( 3 )

Package

100 µl

## Applications

## Application Note

\*Optimal dilutions/concentrations should be determined by the researcher.

Suggested dilution	Recommended dilution
WB	1:1,000
ICC/IF	1:100-1:200
IHC-P	1:1000
IHC-Fr	1:250
FCM	1-2µg/test
ELISA	Assay dependent

Not tested in other applications.

**Calculated MW** 16 kDa. ( [Note](#) )

**Product Note** This antibody does not cross-react with cellular retinol binding protein (CRBP), performic acid oxidized CRBP, interphotoreceptor retinoid binding protein or retinol binding protein.

## Properties

Form	Liquid
Buffer	Ascites diluted with PBS
Preservative	0.05% Sodium azide
Storage	Store as concentrated solution. Centrifuge briefly prior to opening vial. For short-term storage (1-2 weeks), store at 4°C. For long-term storage, aliquot and store at -20°C or below. Avoid multiple freeze-thaw cycles.
Immunogen	Oxidized CRABPI from bovine retina.
Purification	Unpurified
Conjugation	Unconjugated



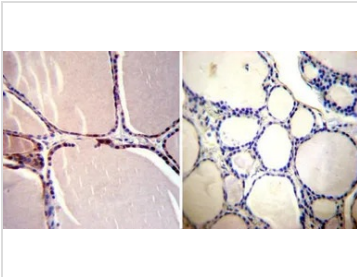
For full product information, images and publications, please visit our [website](#).

For laboratory research use only. Not for any clinical, therapeutic, or diagnostic use in humans or animals. Not for animal or human consumption.

**Note**

Purchasers shall not, and agree not to enable third parties to, analyze, copy, reverse engineer or otherwise attempt to determine the structure or sequence of the product.

## DATA IMAGES



### GTX22816 IHC-P Image

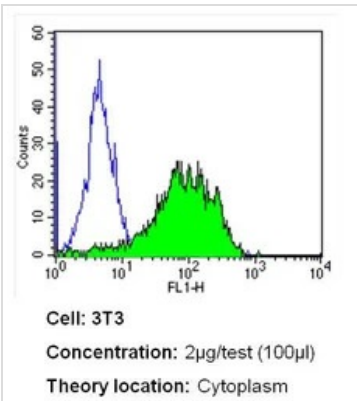
IHC-P analysis of human thyroid tissue using GTX22816 CRABP1 antibody [C-1].

Left : Primary antibody

Right : Negative control without primary antibody

Antigen retrieval : heat induced antigen retrieval was performed using 10mM sodium citrate (pH6.0) buffer, microwaved for 8-15 minutes

Dilution : 1:200

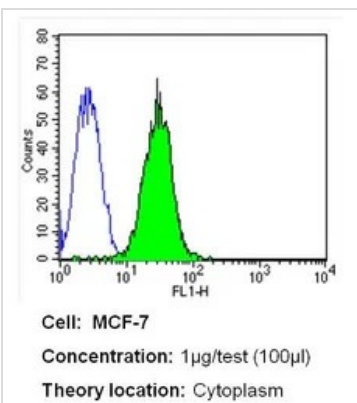


### GTX22816 FCM Image

FACS analysis of NIH-3T3 cells using GTX22816 CRABP1 antibody [C-1] compared to an isotype control (blue).

Dilution : 2 $\mu$ g/test for 40 min at room temperature

Fixation : 2% paraformaldehyde



### GTX22816 FCM Image

FACS analysis of MCF-7 cells using GTX22816 CRABP1 antibody [C-1] compared to an isotype control (blue).

Dilution : 1 $\mu$ g/test for 40 min at room temperature

Fixation : 2% paraformaldehyde



For full product information, images and publications, please visit our [website](http://www.genetex.com).