

SERCA2 ATPase antibody [IID8]

Cat. No. GTX22817

Host	Mouse
Clonality	Monoclonal
Isotype	IgG1
Applications	WB, ICC/IF, IHC-P, IHC-Fr, FCM, IP, ELISA
Reactivity	Human, Mouse, Rat, Rabbit, Sheep, Bovine, Dog, Hamster, Guinea pig, Pig, Amphibians, Primate

Package
100 µl

Applications

Application Note

*Optimal dilutions/concentrations should be determined by the researcher.

Suggested dilution	Recommended dilution
WB	1:500-1:5000
ICC/IF	1:100-1:200
IHC-P	1 µg/ml
IHC-Fr	1:500
FCM	1µg per 10 ⁶ cells
IP	Assay dependent
ELISA	Assay dependent

Not tested in other applications.

Calculated MW 110 kDa. ([Note](#))

Product Note This antibody detects sarcoplasmic or endoplasmic reticulum calcium 2 (SERCA2) ATPase.

Properties

Form	Liquid
Buffer	PBS
Preservative	0.05% Sodium azide
Storage	Store as concentrated solution. Centrifuge briefly prior to opening vial. For short-term storage (1-2 weeks), store at 4°C. For long-term storage, aliquot and store at -20°C or below. Avoid multiple freeze-thaw cycles.
Concentration	1 mg/ml (Please refer to the vial label for the specific concentration.)
Immunogen	Purified canine cardiac sarcoplasmic reticulum.
Purification	Purified by affinity chromatography



For full product information, images and publications, please visit our [website](#).

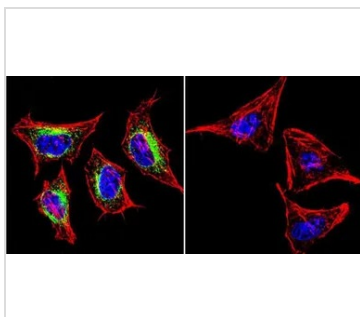
Conjugation

Unconjugated

Note

For laboratory research use only. Not for any clinical, therapeutic, or diagnostic use in humans or animals. Not for animal or human consumption.

Purchasers shall not, and agree not to enable third parties to, analyze, copy, reverse engineer or otherwise attempt to determine the structure or sequence of the product.

DATA IMAGES

GTX22817 ICC/IF Image

ICC/IF analysis of HeLa cells using GTX22817 SERCA2 ATPase antibody [IID8]. Cells were probed without (right) or with(left) an antibody.

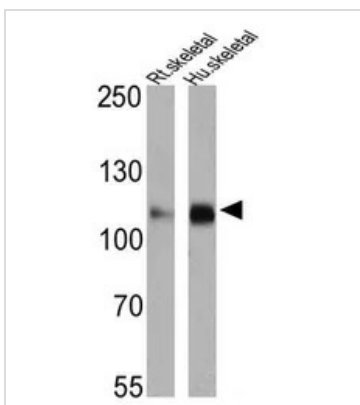
Green : Primary antibody

Blue : Nuclei

Red : Actin

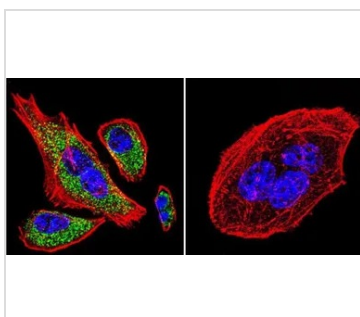
Fixation : formaldehyde

Dilution : 1:200 overnight at 4°C


GTX22817 WB Image

WB analysis of 25 ug of rat skeletal muscle (lane 1) and human skeletal muscle (lane 2) using GTX22817 SERCA2 ATPase antibody [IID8].

Dilution : 1:1000 (rat muscle) and 1:2000 (human muscle)


GTX22817 ICC/IF Image

ICC/IF analysis of A549 cells using GTX22817 SERCA2 ATPase antibody [IID8]. Cells were probed without (right) or with(left) an antibody.

Green : Primary antibody

Blue : Nuclei

Red : Actin

Fixation : formaldehyde

Dilution : 1:200 overnight at 4°C


 For full product information, images and publications, please visit our [website](https://www.genetex.com).