

SERCA1 ATPase antibody [IIH11]

Cat. No. GTX22818

Host	Mouse
Clonality	Monoclonal
Isotype	IgG1
Applications	WB, ICC/IF, IHC-P, IHC-Fr, IHC
Reactivity	Human, Mouse, Rat, Rabbit, Dog, Guinea pig

References (1)

Package

100 µl

Applications

Application Note

*Optimal dilutions/concentrations should be determined by the researcher.

Suggested dilution	Recommended dilution
WB	1:500-1:5000
ICC/IF	1:500
IHC-P	Assay dependent
IHC-Fr	1:20-200
IHC	Assay dependent

Not tested in other applications.

Calculated MW 110 kDa. ([Note](#))

Product Note This antibody detects sarcoplasmic or endoplasmic reticulum calcium 1 (SERCA1) ATPase. It recognizes an epitope between amino acids 199-505 of rabbit skeletal muscle ATPase, a region that is not exposed in native sarcoplasmic reticulum.

Properties

Form	Liquid
Buffer	Ascites diluted with PBS
Preservative	0.05% Sodium azide
Storage	Store as concentrated solution. Centrifuge briefly prior to opening vial. For short-term storage (1-2 weeks), store at 4°C. For long-term storage, aliquot and store at -20°C or below. Avoid multiple freeze-thaw cycles.
Immunogen	Purified rabbit skeletal muscle sarcoplasmic reticulum.
Purification	Unpurified
Conjugation	Unconjugated

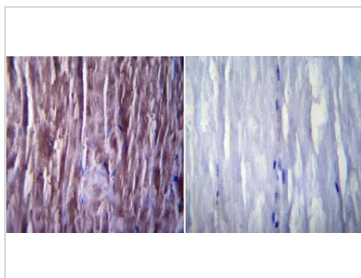


For full product information, images and publications, please visit our [website](#).

For laboratory research use only. Not for any clinical, therapeutic, or diagnostic use in humans or animals. Not for animal or human consumption.

Note

Purchasers shall not, and agree not to enable third parties to, analyze, copy, reverse engineer or otherwise attempt to determine the structure or sequence of the product.

DATA IMAGES

GTX22818 IHC-P Image

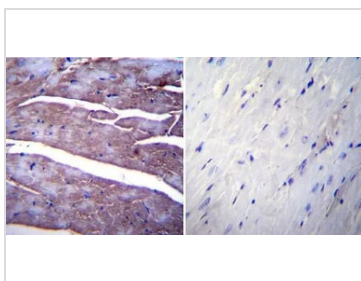
IHC-P analysis of mouse skeletal muscle tissue using GTX22818 SERCA1 ATPase antibody [IIH11].

Left : Primary antibody

Right : Negative control without primary antibody

Antigen retrieval : heat induced antigen retrieval was performed using 10mM sodium citrate (pH6.0) buffer, microwaved for 8-15 minutes

Dilution : 1:200


GTX22818 IHC-P Image

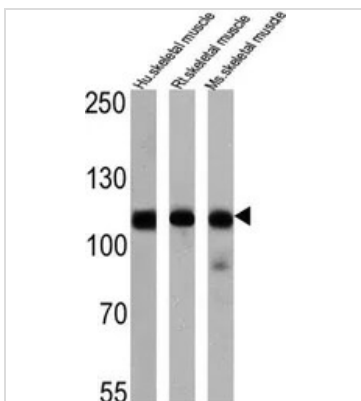
IHC-P analysis of mouse heart tissue using GTX22818 SERCA1 ATPase antibody [IIH11].

Left : Primary antibody

Right : Negative control without primary antibody

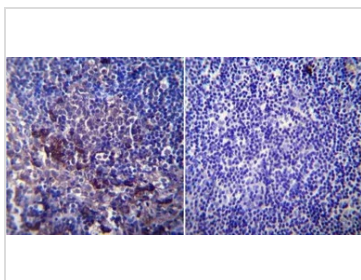
Antigen retrieval : heat induced antigen retrieval was performed using 10mM sodium citrate (pH6.0) buffer, microwaved for 8-15 minutes

Dilution : 1:20


GTX22818 WB Image

WB analysis of 25 ug of human skeletal muscle (lane 1), rat skeletal muscle (lane 2) and mouse skeletal muscle (lane 3) using GTX22818 SERCA1 ATPase antibody [IIH11].

Dilution : 1:2000


GTX22818 IHC-P Image

IHC-P analysis of mouse lymph node tissue using GTX22818 SERCA1 ATPase antibody [IIH11].

Left : Primary antibody

Right : Negative control without primary antibody

Antigen retrieval : heat induced antigen retrieval was performed using 10mM sodium citrate (pH6.0) buffer, microwaved for 8-15 minutes

Dilution : 1:200



For full product information, images and publications, please visit our [website](https://www.genetex.com).