

## SERCA1 ATPase antibody [VE121G9]

**Cat. No. GTX22819**

<b>Host</b>	Mouse
<b>Clonality</b>	Monoclonal
<b>Isotype</b>	IgG1
<b>Applications</b>	WB, ICC/IF, IHC-P, IHC-Fr, IHC
<b>Reactivity</b>	Human, Mouse, Rat, Rabbit, Dog, Pig, Amphibians

References ( 1 )

Package

100 µl

## Applications

**Application Note**

\*Optimal dilutions/concentrations should be determined by the researcher.

Suggested dilution	Recommended dilution
WB	1:500-1:5000
ICC/IF	1:500
IHC-P	1:20
IHC-Fr	Assay dependent
IHC	Assay dependent

Not tested in other applications.

**Calculated MW** 110 kDa. ([Note](#))**Product Note**

This antibody detects sarcoplasmic or endoplasmic reticulum calcium 1 (SERCA1) ATPase. It recognizes an epitope between amino acid residues 506 and the C-terminus of rabbit skeletal muscle ATPase, a region that is exposed in native sarcoplasmic reticulum.

## Properties

<b>Form</b>	Liquid
<b>Buffer</b>	Ascites diluted with PBS
<b>Preservative</b>	0.05% Sodium azide
<b>Storage</b>	Store as concentrated solution. Centrifuge briefly prior to opening vial. For short-term storage (1-2 weeks), store at 4°C. For long-term storage, aliquot and store at -20°C or below. Avoid multiple freeze-thaw cycles.
<b>Immunogen</b>	Purified rabbit skeletal muscle sarcoplasmic reticulum.
<b>Purification</b>	Unpurified
<b>Conjugation</b>	Unconjugated



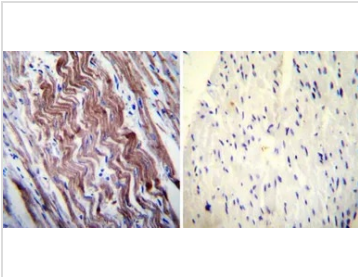
For full product information, images and publications, please visit our [website](#).

For laboratory research use only. Not for any clinical, therapeutic, or diagnostic use in humans or animals. Not for animal or human consumption.

#### Note

Purchasers shall not, and agree not to enable third parties to, analyze, copy, reverse engineer or otherwise attempt to determine the structure or sequence of the product.

#### DATA IMAGES



#### GTX22819 IHC-P Image

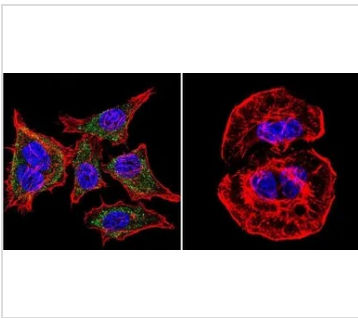
IHC-P analysis of human heart tissue using GTX22819 SERCA1 ATPase antibody [VE121G9].

Left : Primary antibody

Right : Negative control without primary antibody

Antigen retrieval : heat induced antigen retrieval was performed using 10mM sodium citrate (pH6.0) buffer, microwaved for 8-15 minutes

Dilution : 1:200



#### GTX22819 ICC/IF Image

ICC/IF analysis of HeLa cells using GTX22819 SERCA1 ATPase antibody [VE121G9]. Cells were probed without (right) or with (left) an antibody.

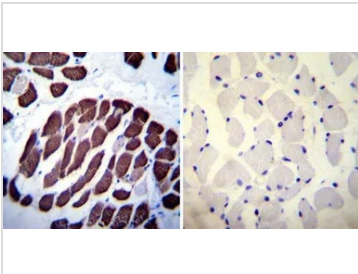
Green : Primary antibody

Blue : Nuclei

Red : Actin

Fixation : formaldehyde

Dilution : 1:20 overnight at 4°C



#### GTX22819 IHC-P Image

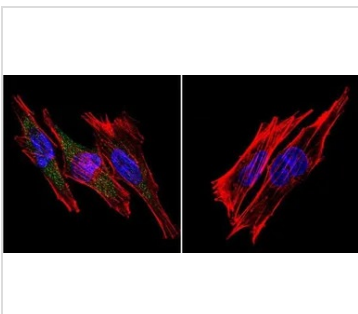
IHC-P analysis of human skeletal muscle tissue using GTX22819 SERCA1 ATPase antibody [VE121G9].

Left : Primary antibody

Right : Negative control without primary antibody

Antigen retrieval : heat induced antigen retrieval was performed using 10mM sodium citrate (pH6.0) buffer, microwaved for 8-15 minutes

Dilution : 1:100



#### GTX22819 ICC/IF Image

ICC/IF analysis of A2058 Cells using GTX22819 SERCA1 ATPase antibody [VE121G9]. Cells were probed without (right) or with (left) an antibody.

Green : Primary antibody

Blue : Nuclei

Red : Actin

Fixation : formaldehyde

Dilution : 1:20 overnight at 4°C



For full product information, images and publications, please visit our [website](#).