

Calsequestrin antibody [VIID12]

Cat. No. GTX22824

Host	Mouse
Clonality	Monoclonal
Isotype	IgG2b
Applications	WB, ICC/IF, IHC-P, IP, IHC
Reactivity	Human, Mouse, Rat, Rabbit, Dog, Chicken, Pig, Rodent

Package
100 µl

Applications

Application Note

*Optimal dilutions/concentrations should be determined by the researcher.

Suggested dilution	Recommended dilution
WB	1:1,000
ICC/IF	1:50-1:500
IHC-P	1:20
IP	Assay dependent
IHC	Assay dependent

Not tested in other applications.

Calculated MW 45 kDa. ([Note](#))

Product Note This antibody recognizes calsequestrin in both type I (slow) and type II (fast) skeletal muscle tissues.

Properties

Form	Liquid
Buffer	Ascites diluted with PBS
Preservative	0.05% Sodium azide
Storage	Store as concentrated solution. Centrifuge briefly prior to opening vial. For short-term storage (1-2 weeks), store at 4°C. For long-term storage, aliquot and store at -20°C or below. Avoid multiple freeze-thaw cycles.
Immunogen	Purified rabbit skeletal muscle sarcoplasmic reticulum.
Purification	Unpurified
Conjugation	Unconjugated

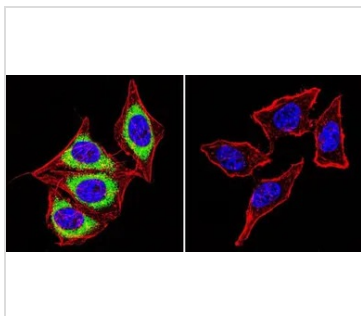


For full product information, images and publications, please visit our [website](#).

For laboratory research use only. Not for any clinical, therapeutic, or diagnostic use in humans or animals. Not for animal or human consumption.

Note

Purchasers shall not, and agree not to enable third parties to, analyze, copy, reverse engineer or otherwise attempt to determine the structure or sequence of the product.

DATA IMAGES

GTX22824 ICC/IF Image

ICC/IF analysis of HeLa cells using GTX22824 Calsequestrin antibody [VIIIID12]. Cells were probed without (right) or with(left) an antibody.

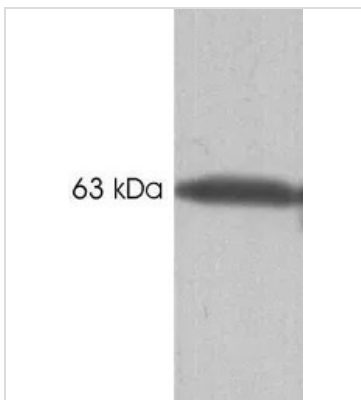
Green : Primary antibody

Blue : Nuclei

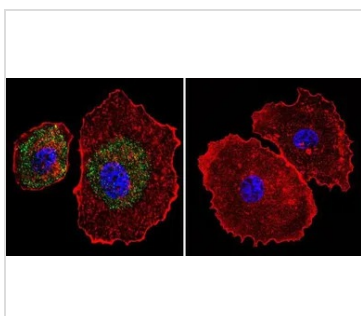
Red : Actin

Fixation : formaldehyde

Dilution : 1:100 overnight at 4 °C


GTX22824 WB Image

WB analysis of canine skeletal muscle extract using GTX22824 Calsequestrin antibody [VIIIID12].


GTX22824 ICC/IF Image

ICC/IF analysis of MCF-7 cells using GTX22824 Calsequestrin antibody [VIIIID12]. Cells were probed without (right) or with(left) an antibody.

Green : Primary antibody

Blue : Nuclei

Red : Actin

Fixation : formaldehyde

Dilution : 1:100 overnight at 4 °C



For full product information, images and publications, please visit our [website](https://www.genetex.com).