

PMCA ATPase antibody [5F10]

Cat. No. GTX22825

Host	Mouse
Clonality	Monoclonal
Isotype	IgG2a
Application	WB, ICC/IF, IHC-P, IHC-Fr, FACS, IP, Neutralizing/Inhibition
Reactivity	Human, Mouse, Rat, Rabbit, Sheep, Bovine, Cat, Dog, Hamster, Chicken, Pig, Amphibians, Primate

Reference (1)

Package

100 µl

APPLICATION

Application Note

*Optimal dilutions/concentrations should be determined by the researcher.

Suggested dilution	Recommended dilution
WB	1:1000-1:5000
ICC/IF	1:100-1:200
IHC-P	1:500
IHC-Fr	1:500
FACS	1µg/test
IP	Assay dependent
Neutralizing/Inhibition	Assay dependent

Not tested in other applications.

Calculated MW 135 kDa. ([Note](#))

Product Note This antibody detects all four known isoforms of the PMCA ATPase. This antibody recognizes an epitope between amino acids 724-783 of the human erythrocyte calcium pump.

PROPERTIES

Form	Liquid
Buffer	Ascites
Preservative	0.05% Sodium azide
Storage	Store as concentrated solution. Centrifuge briefly prior to opening vial. For short-term storage (1-2 weeks), store at 4°C. For long-term storage, aliquot and store at -20°C or below. Avoid multiple freeze-thaw cycles.
Immunogen	Purified human erythrocyte calcium ATPase.
Purification	Unpurified



For full product information, images and publications, please visit our [website](#).

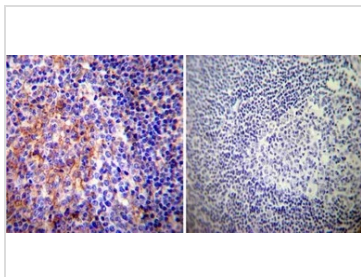
Conjugation

Unconjugated

Note

For laboratory research use only. Not for any clinical, therapeutic, or diagnostic use in humans or animals. Not for animal or human consumption.

Purchasers shall not, and agree not to enable third parties to, analyze, copy, reverse engineer or otherwise attempt to determine the structure or sequence of the product.

DATA IMAGES

GTX22825 IHC-P Image

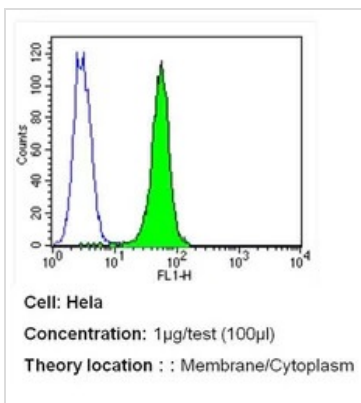
IHC-P analysis of human tonsil tissue using GTX22825 PMCA ATPase antibody [5F10].

Left : Primary antibody

Right : Negative control without primary antibody

Antigen retrieval : heat induced antigen retrieval was performed using 10mM sodium citrate (pH6.0) buffer, microwaved for 8-15 minutes

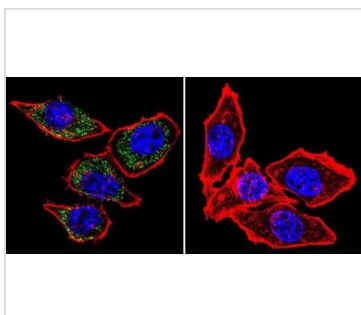
Dilution : 1:200


GTX22825 FACS Image

FACS analysis of HeLa cells using GTX22825 PMCA ATPase antibody [5F10] compared to an isotype control (blue).

Dilution : 1 ug/test for 40 min at room temperature

Fixation : 2% paraformaldehyde


GTX22825 ICC/IF Image

ICC/IF analysis of HeLa cells using GTX22825 PMCA ATPase antibody [5F10]. Cells were probed without (right) or with(left) an antibody.

Green : Primary antibody

Blue : Nuclei

Red : Actin

Fixation : formaldehyde

Dilution : 1:100 overnight at 4 °C



For full product information, images and publications, please visit our [website](https://www.genetex.com).