

## Sodium/Potassium ATPase alpha 3 antibody [XVIF9-G10]

Cat. No. GTX22826

<b>Host</b>	Mouse
<b>Clonality</b>	Monoclonal
<b>Isotype</b>	IgG1
<b>Applications</b>	WB, ICC/IF, IHC-P, IHC-Fr, FCM, IHC
<b>Reactivity</b>	Human, Mouse, Rat, Rabbit, Sheep, Bovine, Dog, Guinea pig, Pig, Amphibians, Shark, Primate

Package  
100 µg

## Applications

## Application Note

\*Optimal dilutions/concentrations should be determined by the researcher.

Suggested dilution	Recommended dilution
WB	1 µg/ml
ICC/IF	5 µg/ml
IHC-P	Assay dependent
IHC-Fr	3 µg/ml
FCM	1µg per 10 <sup>6</sup> cells
IHC	Assay dependent

Not tested in other applications.

**Product Note** This antibody is specific for the alpha-3 subunit.

## Properties

<b>Form</b>	Liquid
<b>Buffer</b>	20mM Potassium Phosphate, 150mM NaCl
<b>Preservative</b>	0.05% Sodium azide
<b>Storage</b>	Store as concentrated solution. Centrifuge briefly prior to opening vial. For short-term storage (1-2 weeks), store at 4°C. For long-term storage, aliquot and store at -20°C or below. Avoid multiple freeze-thaw cycles.
<b>Concentration</b>	1 mg/ml (Please refer to the vial label for the specific concentration.)
<b>Immunogen</b>	Canine cardiac microsomes.
<b>Purification</b>	Protein A purified
<b>Conjugation</b>	Unconjugated



For full product information, images and publications, please visit our [website](#).

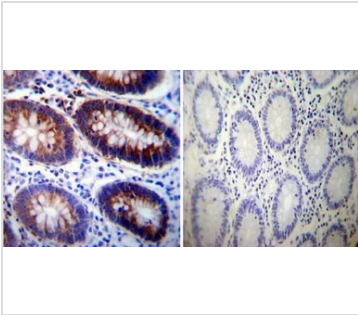
Date 2026 / 05 / 04 Page 1 of 2

For laboratory research use only. Not for any clinical, therapeutic, or diagnostic use in humans or animals. Not for animal or human consumption.

#### Note

Purchasers shall not, and agree not to enable third parties to, analyze, copy, reverse engineer or otherwise attempt to determine the structure or sequence of the product.

#### DATA IMAGES



#### GTX22826 IHC-P Image

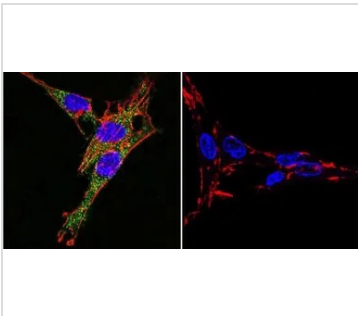
IHC-P analysis of human colon tissue using GTX22826 Sodium/Potassium ATPase alpha 3 antibody [XVIF9-G10].

Left : Primary antibody

Right : Negative control without primary antibody

Antigen retrieval : heat induced antigen retrieval was performed using 10mM sodium citrate (pH6.0) buffer, microwaved for 8-15 minutes

Dilution : 1:200



#### GTX22826 ICC/IF Image

ICC/IF analysis of C6 cells using GTX22826 Sodium/Potassium ATPase alpha 3 antibody [XVIF9-G10]. Cells were probed without (right) or with(left) an antibody.

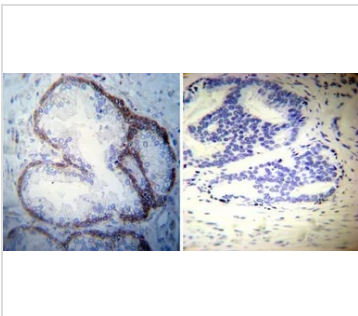
Green : Primary antibody

Blue : Nuclei

Red : Actin

Fixation : formaldehyde

Dilution : 1:20 overnight at 4°C



#### GTX22826 IHC-P Image

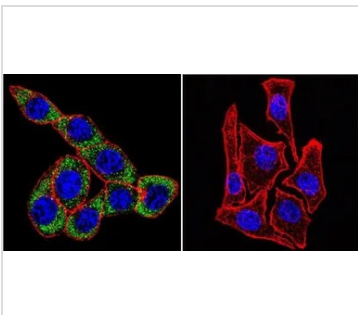
IHC-P analysis of human prostate carcinoma tissue using GTX22826 Sodium/Potassium ATPase alpha 3 antibody [XVIF9-G10].

Left : Primary antibody

Right : Negative control without primary antibody

Antigen retrieval : heat induced antigen retrieval was performed using 10mM sodium citrate (pH6.0) buffer, microwaved for 8-15 minutes

Dilution : 1:50



#### GTX22826 ICC/IF Image

ICC/IF analysis of HeLa cells using GTX22826 Sodium/Potassium ATPase alpha 3 antibody [XVIF9-G10]. Cells were probed without (right) or with(left) an antibody.

Green : Primary antibody

Blue : Nuclei

Red : Actin

Fixation : formaldehyde

Dilution : 1:20 overnight at 4°C



For full product information, images and publications, please visit our [website](#).