

Ryanodine Receptor antibody [C3-33]

Cat. No. GTX22827

Host	Mouse
Clonality	Monoclonal
Isotype	IgG1
Applications	WB, ICC/IF, IHC-P, IHC-Fr, FCM, IP
Reactivity	Human, Mouse, Rat, Rabbit, Dog, Chicken, Guinea pig, Pig, Amphibians, Fish

Package
100 µg

Applications

Application Note

*Optimal dilutions/concentrations should be determined by the researcher.

Suggested dilution	Recommended dilution
WB	1 µg/ml
ICC/IF	1:50
IHC-P	1 µg/ml
IHC-Fr	1 µg/ml
FCM	Assay dependent
IP	Assay dependent

Not tested in other applications.

Product Note This antibody detects ryanodine receptor 2 (RyR-2) and weakly detects RyR-1.

Properties

Form	Liquid
Buffer	PBS
Preservative	0.05% Sodium azide
Storage	Store as concentrated solution. Centrifuge briefly prior to opening vial. For short-term storage (1-2 weeks), store at 4°C. For long-term storage, aliquot and store at -20°C or below. Avoid multiple freeze-thaw cycles.
Concentration	1 mg/ml (Please refer to the vial label for the specific concentration.)
Immunogen	Canine cardiac ryanodine receptor.
Purification	Protein G purified
Conjugation	Unconjugated

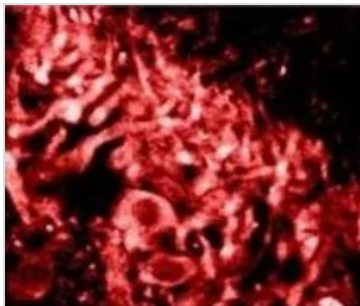
For full product information, images and publications, please visit our [website](#).

For laboratory research use only. Not for any clinical, therapeutic, or diagnostic use in humans or animals. Not for animal or human consumption.

Note

Purchasers shall not, and agree not to enable third parties to, analyze, copy, reverse engineer or otherwise attempt to determine the structure or sequence of the product.

DATA IMAGES



GTx22827 IHC-Fr Image

IHC-Fr analysis of rat brain hippocampus tissue using GTx22827 Ryanodine Receptor antibody [C3-33].



For full product information, images and publications, please visit our [website](#).