

MECP2 antibody

Cat. No. GTX22828

Host	Rabbit
Clonality	Polyclonal
Isotype	IgG
Applications	WB, ICC/IF, IHC-P, IP, IHC
Reactivity	Human, Mouse, Rat, Drosophila, Primate

References (2)
 Package
 50 µg

Applications

Application Note

*Optimal dilutions/concentrations should be determined by the researcher.

Suggested dilution	Recommended dilution
WB	1:1500
ICC/IF	1:100-1:200
IHC-P	1:200-1:2000
IP	Assay dependent
IHC	Assay dependent

Not tested in other applications.

Calculated MW 52 kDa. ([Note](#))

Properties

Form	Liquid
Buffer	PBS, 0.1% BSA
Preservative	0.05% Sodium azide
Storage	Store as concentrated solution. Centrifuge briefly prior to opening vial. For short-term storage (1-2 weeks), store at 4°C. For long-term storage, aliquot and store at -20°C or below. Avoid multiple freeze-thaw cycles.
Concentration	1 mg/ml (Please refer to the vial label for the specific concentration.)
Immunogen	Synthetic Peptide: M(1) V A G M L G L R E E K S E D(15) C
Purification	Purified by antigen-affinity chromatography
Conjugation	Unconjugated



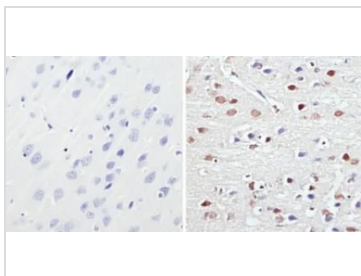
For full product information, images and publications, please visit our [website](#).

For laboratory research use only. Not for any clinical, therapeutic, or diagnostic use in humans or animals. Not for animal or human consumption.

Note

Purchasers shall not, and agree not to enable third parties to, analyze, copy, reverse engineer or otherwise attempt to determine the structure or sequence of the product.

DATA IMAGES

**GTX22828 IHC-P Image**

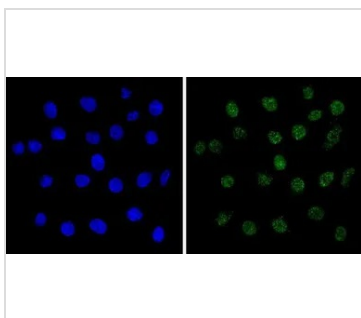
IHC-P analysis of rat brain tissue using GTX22828 MECP2 antibody.

Right : Primary antibody

Left : Negative control without primary antibody

Antigen retrieval : 10mM sodium citrate (pH 6.0), microwaved for 8-15 min

Dilution : 1:1000

**GTX22828 ICC/IF Image**

ICC/IF analysis of C6 cells using GTX22828 MECP2 antibody. Cells were probed without (left) or with(right) an antibody.

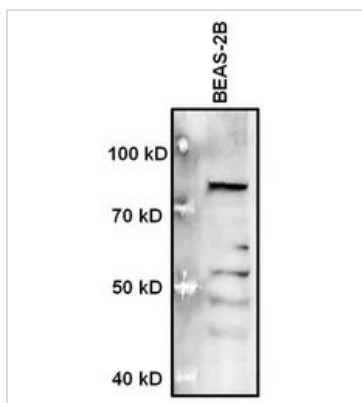
Green : Primary antibody

Blue : Nuclei

Fixation : Formalin

Permeabilization : 0.1% Triton X-100 in TBS for 5-10 minute

Dilution : 1:200 incubated overnight at 4°C

**GTX22828 WB Image**

WB analysis of 40 µg of nuclear protein extracts from BEAS-2B in sample buffer using GTX22828 MECP2 antibody.

Dilution : 1:1500



For full product information, images and publications, please visit our [website](#).